



# Pricelist Heating and cooling systems – 2017

Pricelist, Listino prezzi, Preisliste, Prislita, Lista de precios, Liste de prix, Hinnasto, Cennik, Prislite, Cenik, Lista de preços



# Alfa Laval pricelist for heating and cooling systems 2017

## Content

Page

---

### Heating systems

#### Heating systems small

Alfa Laval AquaStar	1
Alfa Laval AquaMicro	2
Alfa Laval Micro HTC	3
Alfa Laval Micro DPC	4
Alfa Laval Micro RTC	5
Alfa Laval Micro STC	6
Alfa Laval Micro STC2	7
Alfa Laval Mini City	8
Alfa Laval Mini City / Heating only	9
Alfa Laval Mini ECO	10
Alfa Laval Mini ECO / Heating only	11
Mini Plus	12

#### Heating systems medium

Alfa Laval Midi Wall	13
Midi Compact	14
Midi Compact with IQHeat	16

#### Heating systems large

Alfa Laval Maxi	17
-----------------	----

### Tap water systems

Alfa Laval AquaFirst	18
Alfa Laval AquaEfficiency Plate and Gaskets	20
Alfa Laval AquaEfficiency AlfaNova®	22
Alfa Laval AquaEfficiency Copper Brazed	24
AquaCompact	26
AquaProtect	27
AlfaPilot	29

### Storage Tanks

#### Domestic hot water storage tanks

AquaTank Stainless steel 10 bar	30
AquaTank Stainless steel 10 bar with heating coil	32
AquaTank Enamel 7 bar M1/M0	33

## Primary storage tanks

Alfa Laval Primary Tank 5 bar	35
-------------------------------	----

## Pressurisation sets

Á	
Pressosmart MP195 - Single pump	36
Pressosmart MP4 - Single pump	37
Pressosmart MP5 - Double pump	39
Pressosmart MP7 - Double pump	41
Closed expansion vessels	43
Open expansion vessels	44

## Spare parts

Spare parts	45
Á	
Á	
Á	
Á	

## Dear customer,

This price list is valid from 01.01.2017; all previous price lists will lose their validity at this date. The prices shown in this list are our gross prices, based on Term of delivery according to Incoterm 2010, including export packing and loading at production unit (FCA Production site), excluding VAT and export/import duties. "The General Conditions of the selling Alfa Laval Group company apply to all purchases of products contained in this pricelist. These conditions apply whether or not a copy is attached to the order confirmation or whether a reference is made in the order confirmation. A copy of these General Conditions can be obtained from the selling Alfa Laval Group company". Prices are subject to change without notice. While every precaution has been taken, Alfa Laval assumes no responsibility for errors or omission, or for damage resulting from the information contained herein.

---

# **Heating systems**

**Alfa Laval AquaStar**

AquaStar is a domestic hot water unit for **apartments or one-family houses**. This product can be used in district heating networks, secondary networks or local heating networks.



Application	Tap water supply	Space heating supply	
		Radiators	Floor heating
1 apartment or 1 family house	yes	no	no

**Key benefits**

- + Unique and fully automatic temperature control of domestic hot water
- + Pre-assembled, pre-mounted - ready to go
- + Lowest possible return temperature to save energy
- + Time saving maintenance - easy access to components
- + Space saving design - Small size and low weight

Operating limits	Design temperature	Design pressure
Primary heating	120°C	16 bar
Domestic hot water (DHW)	100°C	10 bar

Model	Control equipment	Connections (flow meters)	W (mm)	D (mm)	H (mm)	Weight (kg)	Article no.	Price
AquaStar 1-2.5-l (27 plate version)	-	-	185	115	335	4	738879	<b>697</b>
AquaStar 2-2.5-l (35 plate version)	-	-	185	115	335	4	738915	<b>761</b>

**More information of these products on:**

- Alfa Laval website: <http://www.alfalaval.com/products/heat-transfer/hvac-solutions/Tap-water-systems/AquaStar/>

- Alfa Laval Anytime, our eBusiness for channel partners: <https://ebusiness.alfalaval.com/alweb/view/category/OA188C41-B204-1B42-4529-A32300C3F89C#Tabd>



### Alfa Laval AquaMicro

AquaMicro is a domestic hot water unit for **apartments or one-family houses**. This product can be used in district heating networks, secondary networks or local heating networks.

Application	Tap water supply	Space heating supply	
		Radiators	Floor heating
1 apartment or 1 family house	yes	no	no

#### Key benefits

- + Unique and fully automatic temperature control of domestic hot water
- + Individual metering for both energy and tap water usage
- + Lowest possible return temperature to save energy
- + Time saving maintenance - easy access to components
- + Space saving design - Small size and low weight

Operating limits	Design temperature	Design pressure
Primary heating	120°C	16 bar
Domestic hot water (DHW)	100°C	10 bar

Model	Control equipment	Connections (flow meters)	W (mm)	D (mm)	H (mm)	Weight (kg)	Article no.	Price	Recommended First fix jig
AquaMicro-9-2.5-3x110-C-I	-	3 x 110 x 3/4"	430	160	780	19	738880	1395	AM1115

Options for Alfa Laval AquaMicro	Article no.	Price
First fix jig including 5 Shut-off valves	AM1115	134

#### More information of these products on:

- Alfa Laval website: <http://www.alfalaval.com/products/heat-transfer/hvac-solutions/Tap-water-systems/AquaMicro-NEW/>
- Alfa Laval Anytime, our eBusiness for channel partners: <https://ebusiness.alfalaval.com/alweb/view/category/0A188C41-B204-1B42-4529-A32300C3F89C#Tabd>


**Alfa Laval Micro HTC**

Alfa Laval Micro HTC is an "All-in-one" unique tap water & heating solution. This product can be used in district heating networks or local heating networks for **direct connection**. Applications: **apartments or one-family houses**.

Application	Tap water supply	Space heating supply	
		Radiators	Floor heating
1 apartment or 1 family house	yes	yes	no

**Key benefits**

- + Best adapted solution for basic needs
- + Pre-assembled, pre-mounted - wiring for control on site
- + Time saving maintenance - easy access to components
- + Space saving design - Small size and low weight

Operating limits	Design temperature	Design pressure
Primary heating	100°C	10 bar
Secondary heating	100°C	10 bar
Domestic hot water (DHW)	100°C	10 bar

Model	Control equipment	Connections (flow meters)	W (mm)	D (mm)	H (mm)	Weight (kg)	Article no.	Price	Recommended First fix jig
Micro HTC-9-2.5-0.63-DP-3x110-C-I	Honeywell	3 x 110 x 3/4"	430	160	780	19	738891	<b>1585</b>	AM1117

Options for Alfa Laval Micro HTC		Article no.	Price
First fix jig including 7 Shut-off valves		AM1117	<b>160</b>

**More information of these products on:**

- Alfa Laval Anytime, our eBusiness for channel partners: <https://ebusiness.alfalaval.com/alweb/view/category/OA188C41-B204-1B42-4529-A32300C3F89C#Tabd>


**Alfa Laval Micro DPC**

Alfa Laval Micro DPC is an "All-in-one" unique tap water & heating solution. This product can be used in district heating networks or local heating networks for **direct connection**. Applications: **apartments or one-family houses**.

Application	Tap water supply	Space heating supply	
		Radiators	Floor heating
1 apartment or 1 family house	yes	yes	no

**Key benefits**

- + Unique and fully automatic temperature control of DHW
- + Pre-assembled, pre-mounted - ready to go
- + Lowest possible return temperature for tap water circuit
- + Time saving maintenance - easy access to components
- + Space saving design - Small size and low weight

Operating limits	Design temperature	Design pressure
Primary heating	100°C	10 bar
Secondary heating	100°C	10 bar
Domestic hot water (DHW)	100°C	10 bar

Model	Control equipment	Connections (flow meters)	W (mm)	D (mm)	H (mm)	Weight (kg)	Article no.	Price	Recommended First fix jig
Micro DPC-9-2.5-DP-3x110-C-I	-	3 x 110 x 3/4"	430	160	780	23	738881	<b>1649</b>	AM1117
Micro DPC-2.5-DP-1x110-C-I	-	1 x 110 x 3/4"	430	160	780	23	738882	<b>1585</b>	AM1116

Options for Alfa Laval Micro DPC	Article no.	Price
First fix jig including 6 Shut-off valves	AM1116	<b>145</b>
First fix jig including 7 Shut-off valves	AM1117	<b>160</b>

**More information of these products on:**

- Alfa Laval website: <http://www.alfalaval.com/products/heat-transfer/hvac-solutions/Heating-systems-small/Micro-DPC/>
- Alfa Laval Anytime, our eBusiness for channel partners: <https://ebusiness.alfalaval.com/alweb/view/category/0A188C41-B204-1B42-4529-A32300C3F89C#Tabd>




**Alfa Laval Micro RTC**

Alfa Laval Micro RTC is an "All-in-one" unique tap water & heating solution with automatic wireless room temperature control. This product can be used in district heating networks or local heating networks for **direct connection**. Applications: **apartments or one-family houses**.

Application	Tap water supply	Space heating supply	
		Radiators	Floor heating
1 apartment or 1 family house	yes	yes	no

**Key benefits**

- + Automatic and wireless room temperature control
- + Unique and fully automatic temperature control of DHW
- + Pre-assembled, pre-mounted - ready to go
- + Lowest possible return temperature for tap water circuit
- + Time saving maintenance - easy access to components

Operating limits	Design temperature	Design pressure
Primary heating	100°C	10 bar
Secondary heating	100°C	10 bar
Domestic hot water (DHW)	100°C	10 bar

Model	Control equipment	Connections (flow meters)	W (mm)	D (mm)	H (mm)	Weight (kg)	Article no.	Price	Recommended First fix jig
Micro RTC-721-FS-9-2.5-0.63-DP-3x110-C-I	Honeywell	3 x 110 x 3/4"	430	160	780	23	738883	<b>2092</b>	AM1117
Micro RTC-721-9-2.5-0.63-DP-3x110-C-I	Honeywell	3 x 110 x 3/4"	430	160	780	23	738884	<b>2029</b>	AM1117
Micro RTC-721-2.5-0.63-DP-1x110-C-I	Honeywell	1 x 110 x 3/4"	430	160	780	23	738906	<b>1966</b>	AM1116

Options for Alfa Laval Micro RTC	Article no.	Price
First fix jig including 6 Shut-off valves	AM1116	<b>145</b>
First fix jig including 7 Shut-off valves	AM1117	<b>160</b>

**More information of these products on:**

- Alfa Laval website: <http://www.alfalaval.com/products/heat-transfer/hvac-solutions/Heating-systems-small/Micro-RTC/>

- Alfa Laval Anytime, our eBusiness for channel partners: <https://ebusiness.alfalaval.com/alweb/view/category/OA188C41-B204-1B42-4529-A32300C3F89C#Tabd>



### Alfa Laval Micro STC

Alfa Laval Micro STC is an "All-in-one" unique tap water & heating solution with modulating supply temperature giving a maximum comfort with a minimum energy usage. This product can be used in district heating networks or local heating networks for **direct connection**. Suitable for **apartments or one-family houses**.

Application	Tap water supply	Space heating supply	
		Radiators	Floor heating
1 apartment or 1 family house	yes	yes	yes

#### Key benefits

- + Maximum comfort with a minimum energy usage
- + Unique and fully automatic temperature control of domestic hot water
- + Lowest possible return temperature for tap water and heating circuit
- + Time saving maintenance - easy access to components
- + Space saving design - Small size and low weight

Operating limits	Design temperature	Design pressure
Primary heating	100°C	10 bar
Secondary heating	100°C	10 bar
Domestic hot water (DHW)	100°C	10 bar

Model	Control equipment	Connections (flow meters)	W (mm)	D (mm)	H (mm)	Weight (kg)	Article no.	Price	Recommended First fix jig
Micro STC-GE-737-FS-9-2.5-0.63-DP-3x110-C-I	Honeywell	3 x 110 x 3/4"	430	160	780	25	738885	<b>2726</b>	AM1117
Micro STC-GE-737-FS-9-2.5-0.63-3x110-C-I	Honeywell	3 x 110 x 3/4"	430	160	780	25	738886	<b>2600</b>	AM1117
Micro STC-GE-737-O-9-2.5-0.63-DP-3x110-C-I	Honeywell	3 x 110 x 3/4"	430	160	780	25	738887	<b>2663</b>	AM1117
Micro STC-GE-737-O-9-2.5-0.63-3x110-C-I	Honeywell	3 x 110 x 3/4"	430	160	780	25	738888	<b>2600</b>	AM1117
Micro STC-GE-737-O-9-2.5-0.63-1x110-C-I	Honeywell	1 x 110 x 3/4"	430	160	780	25	738908	<b>2537</b>	AM1116

Options for Alfa Laval Micro STC	Article no.	Price
First fix jig including 6 Shut-off valves	AM1116	<b>145</b>
First fix jig including 7 Shut-off valves	AM1117	<b>160</b>

#### More information of these products on:

- Alfa Laval website: <http://www.alfalaval.com/products/heat-transfer/hvac-solutions/Heating-systems-small/Micro-STC/>
- Alfa Laval Anytime, our eBusiness for channel partners: <https://ebusiness.alfalaval.com/alweb/view/category/OA188C41-B204-1B42-4529-A32300C3F89C#Tabd>


**Alfa Laval Micro STC2**

Alfa Laval Micro STC2 is an "All-in-one" unique tap water & heating solution with modulating supply temperature giving a maximum comfort with a minimum energy usage. This product can be used in district heating networks or local heating networks for **direct connection**. Suitable for **apartments or one-family houses**.

Application	Tap water supply	Space heating supply	
		Radiators	Floor heating
1 apartment or 1 family house	yes	yes	yes

**Key benefits**

- + Maximum comfort with a minimum energy usage with possibility of two independent heating circuits
- + Unique and fully automatic temperature control of domestic hot water
- + Lowest possible return temperature for tap water and heating circuit
- + Time saving maintenance - easy access to components
- + Space saving design - Small size and low weight

Operating limits	Design temperature	Design pressure
Primary heating	100°C	10 bar
Secondary heating	100°C	10 bar
Domestic hot water (DHW)	100°C	10 bar

Model	Control equipment	Connections (flow meters)	W (mm)	D (mm)	H (mm)	Weight (kg)	Article no.	Price	Recommended First fix jig
Micro STC2-GE-737-O-9-2.5-0.63-DP-3x110-C-I	Honeywell	3 x 110 x 3/4"	430	160	780	26	738889	<b>2854</b>	AM1117
Micro STC2-GE-737-O-2.5-0.63-1x110-C-I	Honeywell	1 x 110 x 3/4"	430	160	780	26	738890	<b>2726</b>	AM1116

Options for Alfa Laval Micro STC2	Article no.	Price
First fix jig including 6 Shut-off valves	AM1116	<b>145</b>
First fix jig including 7 Shut-off valves	AM1117	<b>160</b>

**More information of these products on:**

- Alfa Laval website: <http://www.alfalaval.com/products/heat-transfer/hvac-solutions/Heating-systems-small/Micro-STC2/>
- Alfa Laval Anytime, our eBusiness for channel partners: <https://ebusiness.alfalaval.com/alweb/view/category/0A188C41-B204-1B42-4529-A32300C3F89C#Tabd>

### Alfa Laval Mini City

Alfa Laval Mini City supplies hot water to both the tap water & the space heating circuit with **modulating supply temperature**. The space heating supply can be connected to **radiators or floor heating**. On the primary side the unit has an **indirect connection**: one heat exchanger for the space heating circuit and one heat exchanger to produce tap water. Suitable for **apartments and one-family houses**.



Application	Tap water supply	Space heating supply	
		Radiators	Floor heating
1 apartment or 1 family house	yes	yes	yes

#### Key benefits

- + Always sufficient, stable and hygienic domestic hot water
- + Space saving design - extremely slim, low weight and quick installation
- + Individual metering of tap water consumption and energy usage
- + Best solution to save water and energy
- + Offering the lowest return temperature on the market

Operating limits	Design temperature	Design pressure
Primary heating	120°C	16 bar
Secondary heating	90°C	10 bar
Domestic hot water (DHW)	90°C	10 bar

Model	Control equipment	Connections (flow meters)	W (mm)	D (mm)	H (mm)	Weight (kg)	Article no.	Price	Recommended First fix jig
Mini City F2-H1T1-GE7-E-R-O-9-STL-2,5-V0,4-2x110-1x130	Honeywell	2x110x3/4"+ 1 x130 x 1"	430	155	1480	20	738949	<b>3267</b>	AM1117
Mini City F2-H1T1-GE7-E-R-O-9-STL-2,5-V0,63-2x110-1x130	Honeywell	2x110x3/4"+ 1 x130 x 1"	430	155	1480	20	738950	<b>3267</b>	AM1117
Mini City F3-H1T1-GE7-E-R-O-9-2,5-V0,4-2x110-1x130	Honeywell	2x110x3/4"+ 1 x130 x 1"	430	155	1480	20	738951	<b>3106</b>	AM1117
Mini City F3-H1T1-GE7-E-R-O-9-2,5-V1,0-2x110-1x130	Honeywell	2x110x3/4"+ 1 x130 x 1"	430	155	1480	20	738952	<b>3106</b>	AM1117
Mini City F4-H1T1-GE7-E-R-O-2,5-V0,4-1x110-1x110	Honeywell	1x110x3/4"	430	155	1480	20	738953	<b>3044</b>	AM1116

Options for Alfa Laval Mini City	Article no.	Price
First fix jig including 6 Shut-off valves	AM1116	<b>145</b>
First fix jig including 7 Shut-off valves	AM1117	<b>160</b>
Flushing-by-pass kit	AM1140	<b>85</b>
Underfloor heating thermostat	AM1141	<b>177</b>
Additional expansion vessel module 7L	AM1139	<b>71</b>
Adapter energy meter 3/4"-1"	732545	<b>42</b>

#### More information of these products on:

- Alfa Laval website: <http://www.alfalaval.com/products/heat-transfer/hvac-solutions/heating-systems-small/mini-city/>
- Alfa Laval Anytime, our eBusiness for channel partners: <https://ebusiness.alfalaval.com/alweb/view/category/OA188C41-B204-1B42-4529-A32300C3F89C#Tabd>

**Alfa Laval Mini City / Heating only**

Alfa Laval Mini City / **Heating only** supplies hot water to the space heating circuit only. The space heating supply can be connected to **radiators or floor heating**. On the primary side the unit has an **indirect connection**: one heat exchanger between the district heating network and the space heating circuit. Suitable for **apartments and one-family houses**.



Application	Tap water supply	Space heating supply	
		Radiators	Floor heating
1 apartment or 1 family house	no	yes	yes

**Key benefits**

- + Complete comfort heating solution
- + Space saving design - extremely slim, low weight and quick installation
- + Individual metering of heating usage
- + Modulating heating control for best possible return temperature

Operating limits	Design temperature	Design pressure
Primary heating	120°C	16 bar
Secondary heating	90°C	10 bar

Model Alfa Laval Mini City / Heating only	Control equipment	Connections (flow meters)	W (mm)	D (mm)	H (mm)	Weight (kg)	Article no.	Price	Recommended First fix jig
Mini City F1-H1-GE7-E-R-O-V0,4-1x110	Honeywell	1x110x3/4"	430	155	1480	17	738947	<b>2603</b>	AM1114
Mini City F1-H1-GE7-E-R-O-V1,0-1x130	Honeywell	1 x130 x 1"	430	155	1480	17	738948	<b>2603</b>	AM1114

Options for Alfa Laval Mini City / Heating only	Article no.	Price
First fix jig including 4 Shut-off valves	AM1114	<b>129</b>
Flushing-by-pass kit	AM1140	<b>85</b>
Underfloor heating thermostat	AM1141	<b>177</b>
Additional expansion vessel module 7L	AM1139	<b>71</b>
Adapter energy meter 3/4"-1"	732545	<b>42</b>


**Alfa Laval Mini ECO**

Alfa Laval Mini ECO supplies hot water to both the tap water & the space heating circuit with modulating supply temperature. The space heating supply can be connected to **radiators or floor heating**. On the primary side the unit has an **indirect connection**: one heat exchanger for the space heating circuit and one heat exchanger to produce tap water. Suitable for **multi-family houses up to 4 apartments**.

Application	Tap water supply	Space heating supply	
		Radiators	Floor heating
1 – 4 apartments	yes	yes	yes

**Key benefits**

- + Always sufficient, stable and hygienic domestic hot water
- + Space saving design - extremely slim, low weight and quick installation
- + Individual metering of tap water consumption and energy usage
- + Best solution to save water and energy
- + Offering the lowest return temperature on the market

Operating limits	Design temperature	Design pressure
Primary heating	120°C	16 bar
Secondary heating	90°C	10 bar
Domestic hot water (DHW)	90°C	10 bar

Model	Control equipment	Connections (flow meters)	W (mm)	D (mm)	H (mm)	Weight (kg)	Article no.	Price	Recommended set of valves
Mini ECO F2-H2T2-GE7-E-R-O-9-STL-2,5-V0,63-2x110-1x130	Honeywell	2x110x3/4"+ 1 x130 x 1"	540	230	835	32	738963	<b>3722</b>	AM1137
Mini ECO F2-H2T2-GE7-E-R-O-9-STL-2,5-V1,0-2x110-1x130	Honeywell	2x110x3/4"+ 1 x130 x 1"	540	230	835	32	738964	<b>3722</b>	AM1137
Mini ECO F3-H2T2-GE7-E-R-O-9-2,5-V0,63-2x110-1x130	Honeywell	2x110x3/4"+ 1 x130 x 1"	540	230	835	32	738965	<b>3562</b>	AM1137
Mini ECO F4-H2T2-GE7-E-R-O-2,5-V0,63-1x110	Honeywell	1x110x3/4"	540	230	835	32	738966	<b>3499</b>	AM1136
Mini ECO F5-H2T2-GE7-E-R-O-2,5-V1,0-DP-2x110-1x130	Honeywell	2x110x3/4"+ 1 x130 x 1"	540	230	835	32	738967	<b>3690</b>	AM1137
Mini ECO F5-H2T2-GE7-E-R-O-2,5-V1,0-CV-DP-1x130	Honeywell	1 x130 x 1"	540	230	835	32	738968	<b>3696</b>	AM1136

Options for Alfa Laval Mini ECO	Article no.	Price
Set of 6 Shut-off valves	AM1136	<b>145</b>
Set of 7 Shut-off valves	AM1137	<b>160</b>
Flushing-by-pass kit	AM1140	<b>85</b>
Underfloor heating thermostat	AM1141	<b>177</b>
Adapter energy meter 3/4"-1"	732545	<b>42</b>

**More information of these products on:**

- Alfa Laval website: <http://www.alfalaval.com/products/heat-transfer/hvac-solutions/heating-systems-small/mini-eco/>

- Alfa Laval Anytime, our eBusiness for channel partners: <https://ebusiness.alfalaval.com/alweb/view/category/0A188C41-B204-1B42-4529-A32300C3F89C#Tabd>


**Alfa Laval Mini ECO / Heating only**

Alfa Laval Mini ECO / **Heating only** supplies hot water to the space heating circuit only. The space heating supply can be connected to **radiators or floor heating**. On the primary side the unit has an **indirect connection**: one heat exchanger between the district heating network and the space heating circuit. Suitable for **multi-family houses up to 4 apartments**.

Application	Tap water supply	Space heating supply	
		Radiators	Floor heating
1 – 4 apartments	no	yes	yes

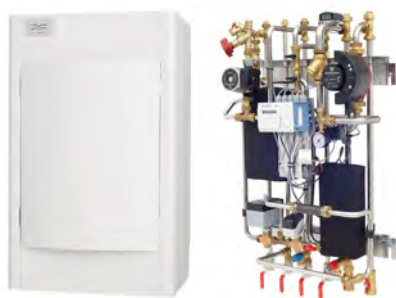
**Key benefits**

- + Complete comfort heating solution
- + Space saving design - extremely slim, low weight and quick installation
- + Modulating heating control for best possible return temperature
- + Easy to install with up/down connections
- + Individual metering of heating usage

Operating limits	Design temperature	Design pressure
Primary heating	120°C	16 bar
Secondary heating	90°C	10 bar

Model	Control equipment	Connections (flow meters)	W (mm)	D (mm)	H (mm)	Weight (kg)	Article no.	Price	Recommended set of valves
Mini ECO F1-H2-GE7-E-R-O-V1.0-1x130	Honeywell	1x130x1"	540	230	835	29	738962	<b>3123</b>	AM1134

Options for Alfa Laval Mini ECO / Heating only	Article no.	Price
Set of 4 Shut-off valves	AM1134	<b>118</b>
Flushing-by-pass kit	AM1140	<b>85</b>
Underfloor heating thermostat	AM1141	<b>177</b>
Adapter energy meter 3/4"-1"	732545	<b>42</b>



### Mini Plus

Mini Plus is a range of substations which supplies tap water and space heating in one single unit. This product can be used in district heating networks or local heating networks for **indirect connection**. Applications: **one-family houses and multi-family buildings**.

Application	Tap water supply	Space heating supply	
		Radiators	Floor heating
1 - 12 apartments	yes	yes	yes

#### Key benefits

- + Pre-assembled, pre-mounted, pre-wired - ready to go
- + Modulating heating control for best possible return temperature
- + Prepared for domestic hot water circulation
- + Connection available for energy metering
- + Easy to install with up/down connections

Operating limits	Design temperature	Design pressure
District heating	120°C	16 bar
Secondary heating	100°C	6 bar
Domestic hot water (DHW)	100°C	10 bar

Model	Control equipment	Connections (energy meter)	W (mm)	D (mm)	H (mm)	Weight (kg)	Article no.	Price
Mini Plus-GE2-SR144-FS-1,6-1,6-DHWC-T-C	Siemens	130 x 1"	600	470	1000	41	738548	<b>6408</b>
Mini Plus-GE3-SR144-FS-1,6-1,6-DHWC-T-C	Siemens	130 x 1"	600	470	1000	41	738549	<b>7066</b>
Mini Plus-GE2-H737-2,5-1,6-DHWC-T-C	Honeywell	130 x 1"	600	470	1000	41	738560	<b>5277</b>
Mini Plus-GE3-H737-2,5-1,6-DHWC-T-C	Honeywell	130 x 1"	600	470	1000	41	738561	<b>5935</b>

#### More information of these products on:

- Alfa Laval website: <http://www.alfalaval.com/products/heat-transfer/hvac-solutions/Heating-systems-small/Mini-Plus/>

- Alfa Laval Anytime, our eBusiness for channel partners: <https://ebusiness.alfalaval.com/alweb/view/category/0A188C41-B204-1B42-4529-A32300C3F89C#Tabd>



**Alfa Laval Midi Wall**

Alfa Laval Midi Wall is a wall-mounted substation range supplying tap water and space heating for multi-family buildings up to 30 apartments. Nominal capacities: 70, 100 & 135 kW. This product can be used in district heating networks or local heating networks for **indirect connection**.



Application	Tap water supply	Space heating supply	
		Radiators	Floor heating
10 - 30 apartments	yes	yes	yes

**Key benefits**

- + Pre-assembled, pre-mounted, pre-wired - ready to go
- + Space saving wall mounted design - Small size and low weight
- + Parallel connected with a 2-stroke heat exchanger for lowest return temperature
- + Reduces the use of energy - Supports individual measuring of flow and energy
- + Pipes in stainless steel for best quality and long term use

Operating limits	Design temperature	Design pressure
District heating	120°C	16 bar
Secondary heating	90°C	10 bar
Domestic hot water (DHW)	90°C	10 bar

Model	Nominal capacity (kW)	Control equipment	Connections (energy meter)	W (mm)	D (mm)	H (mm)	Weight (kg)	Article no.	Price
Midi Wall-70-H-GM1-TA-1.6-1.6	70	Schneider valves	190 x 1"	730	510	1115	62	738864	4866
Midi Wall-100-H-GM1-TA-1.6-1.6	100	Schneider valves	190 x 1"	730	510	1115	64	738865	5289
Midi Wall-135-H-GM1-TA-1.6-2.5	135	Schneider valves	190 x 1"	730	510	1115	66	738866	5896
Midi Wall-70-H-GM1-SR-1.6-1.6	70	Siemens valves	190 x 1"	730	510	1115	61	738867	4548
Midi Wall-100-H-GM1-SR-1.6-1.6	100	Siemens valves	190 x 1"	730	510	1115	63	738868	4972
Midi Wall-135-H-GM1-SR-1.6-2.5	135	Siemens valves	190 x 1"	730	510	1115	65	738869	5578
Midi Wall-70-H-GM1-TA2222-1.6-1.6	70	Schneider TA2222	190 x 1"	730	510	1115	68	738870	6980
Midi Wall-100-H-GM1-TA2222-1.6-1.6	100	Schneider TA2222	190 x 1"	730	510	1115	70	738871	7404
Midi Wall-135-H-GM1-TA2222-1.6-2.5	135	Schneider TA2222	190 x 1"	730	510	1115	72	738872	8010
Midi Wall-70-H-GM1-SR144-1.6-1.6	70	Siemens SR144	190 x 1"	730	510	1115	65	738873	6031
Midi Wall-100-H-GM1-SR144-1.6-1.6	100	Siemens SR144	190 x 1"	730	510	1115	67	738874	6454
Midi Wall-135-H-GM1-SR144-1.6-2.5	135	Siemens SR144	190 x 1"	730	510	1115	69	738875	7059

Options for Midi Wall	Article no.	Price
3-point flanged meter section 260 x F25	738662	1313
GENI module Magna 25-100 SP-1104 204	SP1104	225
Floor support	FR1183	212
Adjustable valve DHWC	VAB1013	141
Floor heating thermostat	AM1069	185

**More information of these products on:**

- Alfa Laval website: <http://www.alfalaval.com/products/heat-transfer/hvac-solutions/Heating-systems-medium/Midi-Wall/>
- Alfa Laval Anytime, our eBusiness for channel partners: <https://ebusiness.alfalaval.com/alweb/view/category/OA188C41-B204-1B42-4529-A32300C3F89C#Tabd>

**Midi Compact**

Midi Compact is a range of substations for multi-family buildings up to 50 apartments. Nominal capacities: 80 - 200kW . This product can be used in district heating networks or local heating networks for **indirect connection** .



Application	Tap water supply	Space heating supply	
		Radiators	Floor heating
10 - 50 apartments	yes	yes	yes

**Key benefits**

- + Pre-assembled, pre-mounted, pre-wired - ready to go
- + Optimized price/performance with lowest return temperature and best control
- + Extremely small footprint and good accessibility for service and maintenance
- + Two step connected with 2-stroke technology for best control and lowest return temperature
- + Stocked item - short delivery times

Operating limits	Design temperature	Design pressure
District heating	120°C	16 bar
Secondary heating	100°C	10 bar
Domestic hot water (DHW)	100°C	10 bar

Model	Nominal capacity (kW)	Control equipment	Connections (energy meter)	W (mm)	D (mm)	H (mm)	Weight (kg)	Article no.	Price
80-GM1-SR144-1.6-1.6	80	Siemens SR144	-	679	581	1299	112	738683	6561
100-GM1-SR144-1.6-1.6	100	Siemens SR144	-	697	581	1299	117	738684	6925
160-GM1-SR144-2.5-2.5	160	Siemens SR144	-	697	581	1299	122	738685	7509
200-WS3-SR144-2.5-4.0	200	Siemens SR144	-	726	581	1299	127	738686	8325
80-V-GM1-SR144-1.6-1.6	80	Siemens SR144	190 x 1"	764	581	1299	115	738687	7058
100-V-GM1-SR144-1.6-1.6	100	Siemens SR144	190 x 1"	783	581	1299	120	738688	7421
160-V-GM1-SR144-2.5-2.5	160	Siemens SR144	190 x 1"	783	581	1299	125	738689	8005
200-V-WS3-SR144-2.5-4.0	200	Siemens SR144	190 x 1"	811	581	1299	130	738690	8822
80-HB-GM1-SR144-1.6-1.6	80	Siemens SR144	260 x F25	1092	708	1299	120	738691	8776
100-HB-GM1-SR144-1.6-1.6	100	Siemens SR144	260 x F25	1092	708	1299	125	738692	9139
160-HB-GM1-SR144-2.5-2.5	160	Siemens SR144	260 x F25	1092	708	1299	130	738693	9723
200-HB-WS3-SR144-2.5-4.0	200	Siemens SR144	260 x F25	1092	708	1299	135	738694	10540
80-GM1-SR-1.6-1.6	80	Siemens valves	-	679	581	1299	106	738695	5016
100-GM1-SR-1.6-1.6	100	Siemens valves	-	697	581	1299	111	738696	5380
160-GM1-SR-2.5-2.5	160	Siemens valves	-	697	581	1299	116	738697	5965
200-WS2-SR-2.5-4.0	200	Siemens valves	-	726	581	1299	121	738698	6782
80-V-GM1-SR-1.6-1.6	80	Siemens valves	190 x 1"	764	581	1299	109	738699	5513
100-V-GM1-SR-1.6-1.6	100	Siemens valves	190 x 1"	783	581	1299	114	738700	5876
160-V-GM1-SR-2.5-2.5	160	Siemens valves	190 x 1"	783	581	1299	119	738701	6461
200-V-WS2-SR-2.5-4.0	200	Siemens valves	190 x 1"	811	581	1299	124	738702	7278
80-GM1-TA2222-1.6-1.6	80	Schneider TA2222	-	679	581	1299	112	738707	7392
100-GM1-TA2222-1.6-1.6	100	Schneider TA2222	-	697	581	1299	117	738708	7756
160-GM1-TA2222-2.5-2.5	160	Schneider TA2222	-	697	581	1299	122	738709	8341
200-WS3-TA2222-2.5-4.0	200	Schneider TA2222	-	726	581	1299	127	738710	9158
80-V-GM1-TA2222-1.6-1.6	80	Schneider TA2222	190 x 1"	764	581	1299	115	738711	7889
100-V-GM1-TA2222-1.6-1.6	100	Schneider TA2222	190 x 1"	783	581	1299	120	738712	8252
160-V-GM1-TA2222-2.5-2.5	160	Schneider TA2222	190 x 1"	783	581	1299	125	738713	8837
200-V-WS3-TA2222-2.5-4.0	200	Schneider TA2222	190 x 1"	811	581	1299	130	738714	9654



Model	Nominal capacity (kW)	Control equipment	Connections (energy meter)	W (mm)	D (mm)	H (mm)	Weight (kg)	Article no.	Price
80-HB-GM1-TA2222-1.6-1.6	80	Schneider TA2222	260 x F25	1092	708	1299	120	738715	9607
100-HB-GM1-TA2222-1.6-1.6	100	Schneider TA2222	260 x F25	1092	708	1299	125	738716	9970
160-HB-GM1-TA2222-2.5-2.5	160	Schneider TA2222	260 x F25	1092	708	1299	130	738717	10555
200-HB-WS3-TA2222-2.5-4.0	200	Schneider TA2222	260 x F25	1092	708	1299	135	738718	11372
80-GM1-TA-1.6-1.6	80	Schneider valves	-	679	581	1299	106	738719	5076
100-GM1-TA-1.6-1.6	100	Schneider valves	-	697	581	1299	111	738720	5439
160-GM1-TA-2.5-2.5	160	Schneider valves	-	697	581	1299	116	738721	6023
200-WS2-TA-2.5-4.0	200	Schneider valves	-	726	581	1299	121	738722	6840
80-V-GM1-TA-1.6-1.6	80	Schneider valves	190 x 1"	764	581	1299	109	738723	5572
100-V-GM1-TA-1.6-1.6	100	Schneider valves	190 x 1"	783	581	1299	114	738724	5936
160-V-GM1-TA-2.5-2.5	160	Schneider valves	190 x 1"	783	581	1299	119	738725	6520
200-V-WS2-TA-2.5-4.0	200	Schneider valves	190 x 1"	811	581	1299	124	738726	7337

Options for Midi Compact	Article no.	Price
4-points secondary meter	MA1031	820
3-points secondary meter	MA1032	780
GENI Module Magna	SP1104	225
IF Module Wilo	SP1075	221

**More information of these products on:**

- Alfa Laval website: <http://www.alfalaval.com/products/heat-transfer/hvac-solutions/Heating-systems-medium/Midi-Compact/>
- Alfa Laval Anytime, our eBusiness for channel partners: <https://ebusiness.alfalaval.com/alweb/view/category/OA188C41-B204-1B42-4529-A32300C3F89C#Tabd>

**Midi Compact with IQHeat**

Range of the most advanced substations equipped with the Alfa Laval developed software - the IQHeat controller - monitoring the lowest return temperatures. This product can be used in district heating networks or local heating networks for **indirect connection**. Applications: multi-family buildings up to 50 apartments.



Application	Tap water supply	Space heating supply	
		Radiators	Floor heating
10 - 50 apartments	yes	yes	yes

**Key benefits**

- + Remote communication
- + Proven energy savings > 15%
- + Pre-assembled, pre-mounted, pre-wired - ready to go
- + Ensures the lowest return temperature on primary side
- + Extremely small footprint and good accessibility for service and maintenance

Operating limits	Design temperature	Design pressure
District heating	120°C	16 bar
Secondary heating	100°C	6 bar
Domestic hot water (DHW)	100°C	10 bar

Model	Nominal capacity (kW)	Control equipment	Connections (energy meter)	W (mm)	D (mm)	H (mm)	Weight (kg)	Article no.	Price
80-GM1-IQHeat-1.6-1.6	80	Alfa Laval IQHeat	-	679	581	1299	113	*	10572
100-GM1-IQHeat-1.6-1.6	100	Alfa Laval IQHeat	-	697	581	1299	118	*	10937
160-GM1-IQHeat-2.5-2.5	160	Alfa Laval IQHeat	-	697	581	1299	123	*	11522
200-WS2-IQHeat-2.5-4.0	200	Alfa Laval IQHeat	-	726	581	1299	128	*	12337
80-V-GM1-IQHeat-1.6-1.6	80	Alfa Laval IQHeat	190 x 1"	764	581	1299	116	*	11068
100-V-GM1-IQHeat-1.6-1.6	100	Alfa Laval IQHeat	190 x 1"	783	581	1299	121	*	11433
160-V-GM1-IQHeat-2.5-2.5	160	Alfa Laval IQHeat	190 x 1"	783	581	1299	126	*	12018
200-V-WS2-IQHeat-2.5-4.0	200	Alfa Laval IQHeat	190 x 1"	811	581	1299	131	*	12834
80-HB-GM1-IQHeat-1.6-1.6	80	Alfa Laval IQHeat	260 x F25	1092	708	1299	121	*	12786
100-HB-GM1-IQHeat-1.6-1.6	100	Alfa Laval IQHeat	260 x F25	1092	708	1299	126	*	13151
160-HB-GM1-IQHeat-2.5-2.5	160	Alfa Laval IQHeat	260 x F25	1092	708	1299	131	*	13736
200-HB-WS2-IQHeat-2.5-4.0	200	Alfa Laval IQHeat	260 x F25	1092	708	1299	136	*	14552

Options for Midi Compact with IQHeat	Description	Article no.	Price
IQWeb 200 **	Web-module, including local web-page	SO1022	1576
IQMeter 200 **	M-Bus communication energy meter	SO1023	618
IQBacNet **	BacNet communication module	SO1025	1009
Pressure sensor	Pressure monitoring secondary side. Only available in combination with IQMeter 200	AM1007	514

\* Midi Compact with IQHeat has to be selected in AlfaSelect / CAS. Please consult Alfa Laval

\*\* Maximum 2 out of the 3 communication systems can be added

**More information of these products on:**

- Alfa Laval website: <http://www.alfalaval.com/products/heat-transfer/hvac-solutions/Heating-systems-medium/Midi-Compact-with-IQHeat/>
- Alfa Laval Anytime, our eBusiness for channel partners: <https://ebusiness.alfalaval.com/alweb/view/category/OA188C41-B204-1B42-4529-A32300C3F89C#Tabd>

## Alfa Laval Maxi

The Alfa Laval Maxi range is a very large range of heating & cooling systems with multiple possibilities in capacities and applications. Maxi range offers an **engineered** solution according to customers needs and the requirements of the building.



### Applications

- Apartment blocks
- Commercial centres
- Offices
- Public buildings
- Factories etc.

### Supplies

- Domestic Hot Water & space heating: 4 circuits maximum
- Space heating only
- Cooling

### Nominal capacities

- 50kW - 10MW

### Primary source

- District heating circuit
- District cooling circuit
- Local networks

### Control equipment

- Alfa Laval IQHeat with built-in IQWeb (web solution), IQMeter (Mbus heat meter) or IQBacNet option or
- District cooling circuit
- other control equipment brands

### Key benefits

- The Alfa Laval "Plug & play solution": easy to install, easy to maintain
- Top quality with unique and world-leading expertise
- Most energy efficient solution thanks to optimum heat recovery & low return temperatures
- Supervision via customer's computer, smartphone or control panel (IQWeb solution)
- "All-in-one": 1 single system for any type of heating & cooling circuit (1 to 4 different heat exchangers)



### Selection

Please contact your local Alfa Laval company



Operating limits	Design temperature	Design pressure
District heating	120°C - 150°C	16 bar - 25 bar
District cooling	50°C	16 bar
Secondary heating	100°C	10bar
Secondary cooling	0°C	10 bar
Domestic hot water (DHW)	90°C	10 bar

### More information of these products on:

- Alfa Laval website: <http://www.alfalaval.com/products/heat-transfer/hvac-solutions/Heating-systems-large/>
- Alfa Laval Anytime, our eBusiness for channel partners: <https://ebusiness.alfalaval.com/alweb/view/category/0A188C41-B204-1B42-4529-A32300C3F89C#Tabd>

# **Tap water systems**

### Alfa Laval AquaFirst

Very competitive tap water system with remote control and class A pump that provides large quantities of Domestic Hot Water (DHW) for any collective application. Nominal capacities: 50-1000 kW.

#### Key benefits

- + Very competitive price combined with staggering functionalities
- + 3-port mixing valve solution with low energy class A pump(s) on primary
- + Pre-assembled, pre-mounted, pre-wired - ready to go
- + Remote communication with Building Management Systems (via ModBus)
- + Hot water in a split second thanks to fast response control valves

**Prices include the Expanded PolyPropylene (EPP) insulation**



Nominal capacities and flow rates are given for: 80°C primary inlet and 10 /55 °C secondary DHW side

Operating limits	Design temperature *	Design pressure
Primary	110°C	10 bar
Secondary	100°C	10 bar

#### Direct (Instantaneous) version

Model	Nominal capacity (kW)	DHW flowrate (m <sup>3</sup> /h)	L x W x H (mm)	IS**		ID**	
				Article no.	Price	Article no.	Price
2000	35	0,7	485x407x1025	FI2007IS	3615	FI2007ID	4347
2000	105	2,0	485x407x1025	FI2017IS	3792	FI2017ID	4513
4000	195	3,7	485x407x1025	FI4027IS	4527	FI4027ID	5577
4000	285	5,5	485x407x1025	FI4045IS	4676	FI4045ID	5710
6000	320	6,2	846x504x1365	FI6113IS	5453	FI6113ID	6511
6000	470	9,0	846x504x1365	FI6123IS	5469	FI6123ID	6898
8000	650	12,5	846x504x1365	FI8031IS	7111	FI8031ID	8731
8000	800	15,4	846x504x1365	FI8055IS	8064	FI8055ID	9725

#### Indirect (Semi-Instantaneous) version

Model	Nominal capacity (kW)	DHW flowrate (m <sup>3</sup> /h)	L x W x H (mm)	SS**		DS**		DD**	
				Article no.	Price	Article no.	Price	Article no.	Price
2000	35	0,7	485x533x1025	FI2007SS	4384	FI2007DS	5185	FI2007DD	5824
2000	105	2,0	485x533x1025	FI2017SS	4556	FI2017DS	5343	FI2017DD	5995
4000	195	3,7	485x533x1025	FI4027SS	5280	FI4027DS	6417	FI4027DD	7049
4000	285	5,5	485x533x1025	FI4045SS	5556	FI4045DS	6694	FI4045DD	7328
6000	320	6,2	846x504x1365	FI6113SS	5912	FI6113DS	6961	FI6113DD	7515
6000	470	9,0	846x504x1365	FI6123SS	6096	FI6123DS	7623	FI6123DD	8176
8000	650	12,5	846x504x1365	FI8031SS	8727	FI8031DS	10480	FI8031DD	11103
8000	750	14,3	846x504x1365	FI8055SS	8958	FI8055DS	10732	FI8055DD	11356

\* In accordance with each country's legislation

\*\* IS = Single primary pump / \*\* ID = Double primary pump

\*\* SS = Single primary pump, single charging pump

\*\* DS = Double primary pump, single charging pump

\*\* DD = Double primary pump, double charging pump

Options for AquaFirst	Model	Article no.	Price
additional costs for rockwool isoxal insulation instead of EPP standard insulation	2000 & 4000	CALFIRSTM3	<b>199</b>
additional costs for rockwool isoxal insulation instead of EPP standard insulation	6000 & 8000	CALFIRSTM6	<b>136</b>
2 NTC20K sensor immersion and contact with glands	All models	KITFIS2S3	<b>148</b>
15 bar pressure test with certificat	All models	PRESTEST1	<b>199</b>

- For other temperature program and/or capacity, please make use of the Quick Selection Tables in our product brochure on our public website or Anytime (Alfa Laval's extranet)

### Standard version equipment

3-port valve with the dedicated 15 seconds speed 0-10 V 24V actuator

Single or double headed **Class A cast iron primary pump** factory fitted and electrically wired

Single or double headed **Stainless Steel charging pump** factory fitted and electrically wired

M3 HT or M6M ML/MH stainless steel 0,5 mm plates 316 with EPDMFF clip-on gaskets, insulated with an Expanded Polypropylen (EPP) insulation

10 bar pressure relief valve on DHW side and NTC20K temperature sensors with stainless steel sleeve

IP54 electrical control box incorporating ModBus RTU RS485 DHW full functionalities Micro3000 controller

Suitable for connection to a 230 V / 1 Ph / 50 Hz + Earth power supply

- Complies with:

- Article 4.3 according to PED 2014/68/EU
- Art. 3.3, Low Voltage Directive (LVD) 73/23/EEC mandated by 2006/95/EEC.
- Following norms have been applied: EN 60335 1- partial & EN60204-1 partial

### More information of these products on:

- Alfa Laval website: <http://www.alfalaval.com/products/heat-transfer/hvac-solutions/Tap-water-systems/AquaFirst/>

- Alfa Laval Anytime, our eBusiness for channel partners: <https://ebusiness.alfalaval.com/alweb/view/category/0A188C41-B204-1B42-4529-A32300C3F89C#Tabd>



## Alfa Laval AquaEfficiency Plate and Gaskets

The most energy-efficient tap water system ensuring the **lowest return temperature** on primary side. AquaEfficiency provides large quantities of Domestic Hot Water (DHW) for any collective application. Best savings if combined with a **condensing boiler**: From 50kW to 750kW with 70°C on primary.



### Key benefits

- + Best boiler condensation thanks to low return temperature and unique primary flow rate controls
- + Robust and reliable 3-port mixing valve solution
- + Controlled class A variable speed pump(s) on primary and secondary side
- + Pre-assembled, pre-mounted, pre-wired - ready to go
- + Remote communication with Building Management Systems (via ModBus)

Nominal capacities and flow rates are given for: primary inlet 70°C and DHW 10 /60 °C  
Free pressure on primary side: ≥ 5 Kpa

Operating limits	Design temperature *	Design pressure
Primary	110°C	10 bar
Secondary	100°C	10 bar

### Direct (Instantaneous) version

Model	Nominal capacity (kW)	DHW flowrate (m <sup>3</sup> /h)	DHW P. drop (Kpa)	L x W x H (mm)	IS**		ID**	
					Article no.	Price	Article no.	Price
GPHE 3000 Inst.	110	1,9	10	505x850x1315	EFP3013IS	<b>7253</b>	EFP3013ID	<b>8475</b>
GPHE 3000 Inst.	180	3,1	11	505x850x1315	EFP3017IS	<b>7566</b>	EFP3017ID	<b>8786</b>
GPHE 3000 Inst.	250	4,3	10	505x850x1315	EFP3027IS	<b>8014</b>	EFP3027ID	<b>9241</b>
GPHE 5000 Inst.	350	6	11	505x850x1315	EFP5037IS	<b>8393</b>	EFP5037ID	<b>9620</b>
GPHE 7000 Inst.	510	8,8	15	505x850x1315	EFP7045IS	<b>9599</b>	EFP7045ID	<b>11851</b>
GPHE 7000 Inst.	640	11	11	505x850x1315	EFP7069IS	<b>10167</b>	EFP7069ID	<b>12419</b>
GPHE 9000 Inst.	750	12,9	9	505x850x1315	EFP9097IS	<b>11903</b>	EFP9097ID	<b>14154</b>

### Indirect (Semi-Instantaneous) version

Model	Nominal capacity (kW)	DHW flowrate (m <sup>3</sup> /h)	DHW free pressure (Kpa)	L x W x H (mm)	SS**		DS**		DD**	
					Article no.	Price	Article no.	Price	Article no.	Price
GPHE 3000 Semi I.	110	1,9	33	505x850x1315	EFP3013SS	<b>8983</b>	EFP3013DS	<b>10205</b>	EFP3013DD	<b>11968</b>
GPHE 3000 Semi I.	180	3,1	26	505x850x1315	EFP3017SS	<b>9296</b>	EFP3017DS	<b>10516</b>	EFP3017DD	<b>12280</b>
GPHE 3000 Semi I.	250	4,3	20	505x850x1315	EFP3027SS	<b>9744</b>	EFP3027DS	<b>10972</b>	EFP3027DD	<b>12734</b>
GPHE 5000 Semi I.	350	6	7	505x850x1315	EFP5037SS	<b>10124</b>	EFP5037DS	<b>11349</b>	EFP5037DD	<b>13111</b>
GPHE 7000 Semi I.	510	8,8	19	505x850x1315	EFP7045SS	<b>11476</b>	EFP7045DS	<b>13728</b>	EFP7045DD	<b>15637</b>
GPHE 7000 Semi I.	510	8,8	27	505x850x1315	EFP7069SS	<b>12454</b>	EFP7069DS	<b>14000</b>	EFP7069DD	<b>15909</b>
GPHE 9000 Semi I.	510	8,8	30	505x850x1315	EFP9097SS	<b>13882</b>	EFP9097DS	<b>15039</b>	EFP9097DD	<b>17178</b>

\* In accordance with each country's legislation

\*\* IS = Single primary pump / \*\* ID = Double primary pump

\*\* SS = Single primary pump, single charging pump

\*\* DS = Double primary pump, single charging pump

\*\* DD = Double primary pump, double charging pump

SolarFlow kit	Model	Article no.	Price
SolarFlow sensor kit for AquaEfficiency	Direct version only	KITSFPT1	<b>261</b>
15 bar pressure test with certificat	All models	PRESTEST1	<b>199</b>
Expanded PolyPropylene (EPP) insulation — fire class: E / EN13501-1, and B2/ DIN4102-1 — instead of the standard rockwool isoxal insulation	P&G 3000, 5000 & 7000	CALEFPEPP	<b>-263</b>

### Standard version equipment

- 3-port valve with the dedicated 15 seconds speed 0-10 V 24V actuator
- **Controlled Class A variable primary speed pump(s)**: single or double
- **Controlled stainless steel Class A variable charging speed pump(s)**: single or double
- M6H AISI 316 with EPDM FF rooftop clip-on gasket heat exchanger with rockwool isoxal insulation
- Additional connections on the back of the heat exchanger for CIP (Cleaning In Place) treatment
- 10 bar pressure relief valve on DHW side
- 3 temperature sensors NTC20K with possibility to reach 7 sensors
- IP54 electrical cont3 temperature sensors NTC20K with possibility to reach 7 sensorsrol box incorporating ModBus RTU RS485 DHW full functionalities Micro3000 controller
- Scaling and thermal efficiency functions
- Suitable for connection to a 230 V / 1 Ph / 50 Hz + Earth power supply
- Complies with:
  - Article 4.3 according to PED 2014/68/EU
  - Art. 3.3, Low Voltage Directive (LVD) 73/23/EEC mandated by 2006/95/EEC.
  - Following norms have been applied: EN 60335 1- partial & EN60204-1 partial

### More information of these products on:

- Alfa Laval website: <http://www.alfalaval.com/products/heat-transfer/hvac-solutions/Tap-water-systems/AquaEfficiency/>
- Alfa Laval Anytime, our eBusiness for channel partners: <https://ebusiness.alfalaval.com/alweb/view/category/0A188C41-B204-1B42-4529-A32300C3F89C#Tabd>

**Alfa Laval AquaEfficiency AlfaNova®**

The most energy-efficient tap water system ensuring the **lowest return temperature** on primary side. AquaEfficiency provides large quantities of Domestic Hot Water (DHW) for any collective application. Best savings if combined with a **condensing boiler**: From 50kW to 450kW with 70°C on primary.

**Key benefits**

- + Best boiler condensation thanks to low return temperature and unique primary flow rate controls
- + Robust and reliable 3-port mixing valve solution
- + Controlled class A variable speed pump(s) on primary and secondary side
- + Pre-assembled, pre-mounted, pre-wired - ready to go
- + Remote communication with Building Management Systems (via ModBus)



Nominal capacities and flow rates are given for: primary inlet 70°C and DHW 10 /60 °C  
Free pressure on primary side: ≥ 5 Kpa

Operating limits	Design temperature *	Design pressure
Primary	110°C	10 bar
Secondary	100°C	10 bar

**Direct (Instantaneous) version**

Model	Nominal capacity (kW)	DHW flowrate (m <sup>3</sup> /h)	DHW P. drop (Kpa)	L x W x H (mm)	IS**		ID**	
					Article no.	Price	Article no.	Price
AN52-30H Inst.	140	2,4	24	480x540x1450	EFF5230IS	5862	EFF5230ID	7041
AN52-50H Inst.	220	3,8	22	480x540x1450	EFF5250IS	6193	EFF5250ID	7374
AN52-60H Inst.	250	4,3	20	480x540x1450	EFF5260IS	8311	EFF5260ID	9496
AN76-50H Inst.	320	5,5	7	590x660x1450	EFF7650IS	8716	EFF7650ID	9900
AN76-70H Inst.	450	7,7	7	590x660x1450	EFF7670IS	9935	EFF7670ID	12393

**Indirect (Semi-Instantaneous) version**

Model	Nominal capacity (kW)	DHW flowrate (m <sup>3</sup> /h)	DHW free pressure (Kpa)	L x W x H (mm)	SS**		DS**		DD**	
					Article no.	Price	Article no.	Price	Article no.	Price
AN52-30H Semi I.	140	2,4	17	480x540x1450	EFF5230SS	7592	EFF5230DS	8773	EFF5230DD	10534
AN52-50H Semi I.	220	3,8	11	480x540x1450	EFF5250SS	7924	EFF5250DS	9103	EFF5250DD	10864
AN52-60H Semi I.	250	4,3	10	480x540x1450	EFF5260SS	10041	EFF5260DS	11225	EFF5260DD	12987
AN76-50H Semi I.	320	5,5	47	590x660x1450	EFF7650SS	10446	EFF7650DS	11631	EFF7650DD	13393
AN76-70H Semi I.	450	7,7	26	590x660x1450	EFF7670SS	11813	EFF7670DS	14022	EFF7670DD	15932

\* In accordance with each country's legislation

\*\* IS = Single primary pump

\*\* ID = Double primary pump

\*\* SS = Single primary pump, single charging pump

\*\* DS = Double primary pump, single charging pump

\*\* DD = Double primary pump, double charging pump

SolarFlow kit	Model	Article no.	Price
SolarFlow sensor kit for AquaEfficiency	Direct version only	KITSFPT1	261
15 bar pressure test with certificat	All models	PRESTEST1	199

### Standard version equipment

- 3-port valve with the dedicated 15 seconds speed 0-10 V 24V actuator
- **Controlled Class A variable primary speed pump(s)**: single or double
- **Controlled stainless steel Class A variable charging speed pump(s)**: single or double
- AlfaNova® insulated fusion bonded heat exchanger (100% stainless steel)
- Additional connections on the back of the heat exchanger for CIP (Cleaning In Place) treatment
- 10 bar pressure relief valve on DHW side
- 3 temperature sensors NTC20K with possibility to reach 7 sensors
- IP54 electrical control box incorporating ModBus RTU RS485 DHW full functionalities Micro3000 controller
- Scaling and thermal efficiency functions
- Suitable for connection to a 230 V / 1 Ph / 50 Hz + Earth power supply
- Complies with:
  - Article 4.3 according to PED 2014/68/EU
  - Art. 3.3, Low Voltage Directive (LVD) 73/23/EEC mandated by 2006/95/EEC.
  - Following norms have been applied: EN 60335 1- partial & EN60204-1 partial

### More information of these products on:

- Alfa Laval website: <http://www.alfalaval.com/products/heat-transfer/hvac-solutions/Tap-water-systems/AquaEfficiency/>
- Alfa Laval Anytime, our eBusiness for channel partners: <https://ebusiness.alfalaval.com/alweb/view/category/0A188C41-B204-1B42-4529-A32300C3F89C#Tabd>


**Alfa Laval AquaEfficiency Copper Brazed**

The most energy-efficient tap water system ensuring the **lowest return temperature** on primary side. AquaEfficiency provides large quantities of Domestic Hot Water (DHW) for any collective application. Best savings if combined with a **condensing boiler**: From 50kW to 570kW with 70°C on primary.

**Key benefits**

- + Best boiler condensation thanks to low return temperature and unique primary flow rate controls
- + Robust and reliable 3-port mixing valve solution
- + Controlled class A variable speed pump(s) on primary and secondary side
- + Pre-assembled, pre-mounted, pre-wired - ready to go
- + Remote communication with Building Management Systems (via ModBus)

Nominal capacities and flow rates are given for: primary inlet 70°C and DHW 10 /60 °C  
Free pressure on primary side: ≥ 5 Kpa

Operating limits	Design temperature *	Design pressure
Primary	110°C	10 bar
Secondary	100°C	10 bar

**Direct (Instantaneous) version**

Model	Nominal capacity (kW)	DHW flowrate (m <sup>3</sup> /h)	DHW P. drop (Kpa)	L x W x H (mm)	IS**		ID**	
					Article no.	Price	Article no.	Price
CB60-30H Inst.	150	2,6	20	480x540x1450	EFB6030IS	5464	EFB6030ID	6635
CB60-50H Inst.	240	4,1	20	480x540x1450	EFB6050IS	7139	EFB6050ID	8586
CB60-60H Inst.	270	4,6	19	480x540x1450	EFB6060IS	7201	EFB6060ID	8648
CB112-50M Inst.	490	8,4	21	590x660x1450	EFB11250IS	8388	EFB11250ID	11110
CB112-70M Inst.	570	9,8	20	590x660x1450	EFB11270IS	8622	EFB11270ID	11342

**Indirect (Semi-Instantaneous) version**

Model	Nominal capacity (kW)	DHW flowrate (m <sup>3</sup> /h)	DHW free pressure (Kpa)	L x W x H (mm)	SS**		DS**		DD**	
					Article no.	Price	Article no.	Price	Article no.	Price
CB60-30H Semi I.	150	2,6	20	480x540x1450	EFB6030SS	7160	EFB6030DS	8294	EFB6030DD	9960
CB60-50H Semi I.	240	4,1	11	480x540x1450	EFB6050SS	9001	EFB6050DS	10414	EFB6050DD	12380
CB60-60H Semi I.	270	4,6	9	480x540x1450	EFB6060SS	9063	EFB6060DS	10476	EFB6060DD	12441
CB112-50M Semi I.	490	8,4	17	590x660x1450	EFB11250SS	10236	EFB11250DS	12955	EFB11250DD	14940
CB112-70M Semi I.	570	9,8	6	590x660x1450	EFB11270SS	10493	EFB11270DS	13212	EFB11270DD	15219

\* In accordance with each country's legislation

\*\* IS = Single primary pump

\*\* ID = Double primary pump

\*\* SS = Single primary pump, single charging pump

\*\* DS = Double primary pump, single charging pump

\*\* DD = Double primary pump, double charging pump

SolarFlowkit	Model	Article no.	Price
SolarFlow sensor kit for AquaEfficiency	Direct version only	KITSFPT1	261
15 bar pressure test with certificat	All models	PRESTEST1	199

### Standard version equipment

- 3-port valve with the dedicated 15 seconds speed 0-10 V 24V actuator
- **Controlled Class A variable primary speed pump(s)**: single or double
- **Controlled stainless steel Class A variable charging speed pump(s)**: single or double
- Copper Brazed insulated heat exchanger
- Additional connections on the back of the heat exchanger for CIP (Cleaning In Place) treatment
- 10 bar pressure relief valve on DHW side
- 3 temperature sensors NTC20K with possibility to reach 7 sensors
- IP54 electrical control box incorporating ModBus RTU RS485 DHW full functionalities Micro3000 controller
- Scaling and thermal efficiency functions
- Suitable for connection to a 230 V / 1 Ph / 50 Hz + Earth power supply
- Complies with:
  - Article 4.3 according to PED 2014/68/EU
  - Art. 3.3, Low Voltage Directive (LVD) 73/23/EEC mandated by 2006/95/EEC.
  - Following norms have been applied: EN 60335 1- partial & EN60204-1 partial

### More information of these products on:

- Alfa Laval website: <http://www.alfalaval.com/products/heat-transfer/hvac-solutions/Tap-water-systems/AquaEfficiency/>
- Alfa Laval Anytime, our eBusiness for channel partners: <https://ebusiness.alfalaval.com/alweb/view/category/0A188C41-B204-1B42-4529-A32300C3F89C#Tabd>



## AquaCompact

Heat exchanger unit with 2-port or 3-port control valve, fixed to a secondary storage tank designed to deliver indirect Domestic Hot Water (DHW). Can be combined with the AquaTank Stainless Steel 316 Ti (300 to 1500L).

### Key benefits

- + Space saving
- + Only low to mid boiler capacity needed
- + Simple solution for low budgets
- + Connection possible to district heating network or to local boiler

Standard versions (photo 1, 2 and 3) do not have a primary kit but this can be ordered as an option. Three primary kit options available:

- 2-port valve: Self-actuated (photo 4)
- 2-port valve: Electronic (photo 5)
- 3-port valve: Electronic (photo 6)

### Selection

AquaCompact has to be configured in our selection tool "AlfaSelect". Please contact your local Alfa Laval company.

## AquaCompact standard versions



## AquaCompact with primary kits versions



### Standard version equipment

- Copper Brazed, AlfaNova or Gasketed plate heat exchanger (photo 1, 2 and 3)
- Insulation (Copper Brazed AlfaNova: included / Gasketed : optional)
- Charging pump
- Balancing valve
- 10 bar pressure relief valve
- Isolating valve and connection pipework and flexible(s)
- Two additional CIP 3/4" connections (Copper Brazed and AlfaNova versions only)

### More information of these products on:

- Alfa Laval website: <http://www.alfalaval.com/products/heat-transfer/hvac-solutions/Tabwater-systems/AquaCompact/>
- Alfa Laval Anytime, our eBusiness for channel partners: <https://ebusiness.alfalaval.com/alweb/view/category/0A188C41-B204-1B42-4529-A32300C3F89C#Tabd>

### AquaProtect

AquaProtect is a range of tap water systems designed to deliver legionella-free Domestic Hot Water (DHW) in the complete network of any collective building. Nominal capacities: up to 756 kW, and more for indirect/semi-instantaneous systems.



#### Key benefits

- + Ensures 70°C thermal treatment against legionella in incoming AND circulation water in a simple way
- + Heat recovery concept to avoid extra energy for thermal disinfection
- + Pre-assembled, pre-mounted, pre-wired - ready to go
- + Easy accessible draining valve for DHW sample collection
- + High reliable materials and low maintenance

Nominal capacities and flow rates are given for: primary inlet 80°C and DHW 10 / 60°C with disinfection at 70°C

Operating limits	Design temperature *	Design pressure
Primary	110°C	10 bar
Secondary	90°C	10 bar

#### Direct (instantaneous) version

Model	Heat supply (kW)	L x W x H (mm)	Weight (kg)	Article no.	Price
T1 - I 3P	174	1500 x 770 x 1460	280	AQPRT1I03PV	18169
T1 - I 5P	291	1500 x 770 x 1460	320	AQPRT1I05PV	19357
T1 - I 7P	407	1500 x 770 x 1460	350	AQPRT1I07PV	23137
T1 - I 9P	523	1500 x 770 x 1460	370	AQPRT1I09PV	24419
T1 - I 11P	640	1690 x 980 x 1660	530	AQPRT1I11PV	25557
T1 - I 13P	756	1780 x 980 x 1660	560	AQPRT1I13PV	26604

#### Indirect (semi-instantaneous) version

Model	Heat supply (kW)	L x W x H (mm)	Weight (kg)	Article no.	Price
T1 - SI 3P	174	1500 x 770 x 1460	300	AQPRT1SI03PV	21001
T1 - SI 5P	291	1500 x 770 x 1460	350	AQPRT1SI05PV	22212
T1 - SI 7P	407	1500 x 770 x 1460	370	AQPRT1SI07PV	25313
T1 - SI 9P	523	1500 x 770 x 1460	390	AQPRT1SI09PV	30589
T1 - SI 11P	640	1690 x 980 x 1660	550	AQPRT1SI11PV	31540
T1 - SI 13P	756	1780 x 980 x 1660	600	AQPRT1SI13PV	31720

Options for AquaProtect			
Control box	Description	Article no.	Price
All models	8 relay CI 594 board fitted in the control box	OPT8RAQPRT1	264
All models	2nd sensor PT100 with 2 meters cable, delivered loose (not mounted)	OPT2SON	165
All models	Data downloading cable & CD Rom	OPTCABLE	374
insulation	Description	Article no.	Price
for model T1 3P & 5P	Metallic/rockwool insulation for AquaProtect	OPTJAQAQPR51	1333
for model T1 7P	Metallic/rockwool insulation for AquaProtect	OPTJAQAQPR52	1333
for model T1 9P	Metallic/rockwool insulation for AquaProtect	OPTJAQAQPR53	1333
for model T1 11P & 13P	Metallic/rockwool insulation for AquaProtect	OPTJAQAQPR61	1626

\* In accordance with each country's legislation

\*\* DIRECT anti-legionella systems: To guarantee 1 minute holding time, we recommend to combine the AquaProtect unit with a 300L storage tank. If a longer holding time is needed, please consult.

\*\*\* INDIRECT anti-legionella systems: The size of the storage tank will define the holding time; a thermal treatment tank and a storage tank could be necessary. Please consult.



### Standard version equipment

- 3-port valve with 24 V actuator controlled via a 0/10 V signal
- Double headed **Class A cast iron primary pump** factory fitted and electrically wired
- 2 Bronze or stainless steel charging pumps in serie, factory fitted and electrically wired
- Two heat exchangers with T5 or M6 316 stainless steel plates with EPDM FF rooftop clip-on gaskets
- 10 bar pressure relief valve on DHW side
- Two immersion sensors
- IP43 electrical control box incorporating Micro 2000 controller
- Complies with:
  - Article 4.3 according to PED 2014/68/EU
  - Art. 3.3, Low Voltage Directive (LVD) 73/23/EEC mandated by 2006/95/EEC.
  - Following norms have been applied: EN 60335 1- partial & EN60204-1 partial

### More information of these products on:

- Alfa Laval website: <http://www.alfalaval.com/products/heat-transfer/hvac-solutions/Tap-water-systems/AquaProtect/>
- Alfa Laval Anytime, our eBusiness for channel partners: <https://ebusiness.alfalaval.com/alweb/view/category/OA188C41-B204-1B42-4529-A32300C3F89C#Tabd>



### AlfaPilot

AlfaPilot is a simple & universal fluid navigation system that gives priority to renewables before any use of fossil energy. The Multi-Energy-Pilot AlfaPilot can be integrated on primary return heating loops of low return temperature units like:

- Alfa Laval Micro STC heat interface units
- Alfa Laval AquaEfficiency DHW systems
- Alfa Laval Maxi or Midi Compact units

#### Key benefits

- + Ideal for heatpump or solar installation
- + Renewable energy source is always prioritised
- + Completely self-governing, always giving the optimum energy solution at any time
- + ModBus RTU RS 485 controller

#### Necessary data to design an AlfaPilot: Primary flow rate

Operating limits	Design temperature *	Design pressure
Primary	110°C / 1°C max. / min.	10 bar

Model	Control valve		Primary flow rate			Primary pressure loss			L x W x H (mm)	Weight (kg)	Article no.	Price
	Diameter	Kvs	m <sup>3</sup> /h	m <sup>3</sup> /h	m <sup>3</sup> /h	Kpa	Kpa	Kpa				
25	25	10	2	2.5	3.6	4	6	13	680 x 260 x 315	24	ASTB25	3343
32	32	16	3	4	7.2	4	6	20	720 x 260 x 315	25	ASTB32	3475
40	40	25	5	6	15	4	6	36	730 x 260 x 315	30	ASTB40	3569
50	50	40	8	13	22	4	11	30	800 x 260 x 315	33	ASTB50	3697

Options for AlfaPilot	Article no.	Price
External sensor NTC20K for Micro3000 controller	OPTSON3000	41

\* In accordance with each country's legislation

#### Standard version equipment

- 3-port valve with 24 V actuator controlled via a 0/10 V signal
- One primary NTC20K sensor
- One PT1000 sensor for primary storage tank, including gloove of 300 mm, and 10 m long wirings
- One contact PT 1000 sensor with 10 m long wirings for outlet control
- IP54 electrical control box incorporating ModBus RTU RS485 DHW full functionalities Micro3000 controller
- Suitable for connection to a 230 V / 1 Ph / 50 Hz + Earth power supply
- Complies with:
  - Article 4.3 according to PED 2014/68/EU
  - Art. 3.3, Low Voltage Directive (LVD) 73/23/EEC mandated by 2006/95/EEC.
  - Following norms have been applied: EN 60335 1- partial & EN60204-1 partial

#### More information of these products on:

- Alfa Laval website: <http://www.alfalaval.com/products/heat-transfer/hvac-solutions/Multi-Energy-Pilot/AlfaPilot/>
- Alfa Laval Anytime, our eBusiness for channel partners: <https://ebusiness.alfalaval.com/alweb/view/category/0A188C41-B204-1B42-4529-A32300C3F89C#Tabd>

# **Storage Tanks**



## AquaTank Stainless steel 10 bar

Domestic hot water storage vessel made of 100% 316 stainless steel type.

AquaTank Stainless steel is approved according to PED and manufactured according to PED 2014/68/EU.

### Key benefits

- + Excellent quality
- + Very long lifetime
- + Extremely hygienic; no galvanic corrosion
- + Energy saving insulations
- + Best hydraulic and so hygienic management on the market of vessel's bottom part

### Inspection opening:

- up to 500 L: one inspection opening of 120 mm
- > 500 L: one inspection opening of 120 mm or 400 mm (manhole)

Max. operating pressure bar gauge	10
Max. operating temperature °C	95

Volume (L)	Description	Inspection opening (mm)	Connections (tw / cw / circ.)	Immersion heater connection	D (mm)	d (mm)	Height (mm)	Weight (kg)	Article no.	Price
150	Standard	120	1" / 1" / 1"	-	700	500	1132	44	AQT015SB4	2171
200	Standard	120	1" / 1" / 1"	-	700	500	1507	51	AQT020SB4	2424
300	Standard	120	2" / 2" / 1"	1 x 2"	750	550	1560	90	AQT030SB4	2926
300	For UK *	120	2" / 2" / 1"	1 x 2"	750	550	1560	90	AQT030SB4U	2967
500	Standard	120	2" / 2" / 1"	1 x 2"	850	650	1815	120	AQT050SB4	3504
500	Additional connection	120	2" / 2" / 1"	2 x 2"	850	650	1815	120	AQT052SB4	3605
500	For UK *	120	2" / 2" / 1"	2 x 2"	850	650	1815	120	AQT052SB4U	3648
750	Standard	120	2" / 2" / 1"	2 x 2"	950	750	2105	180	AQT075SB4	4953
750	Additional connection	120	2" / 2" / 1"	3 x 2"	950	750	2102	180	AQT073SB4	5051
750	Manhole	400	2" / 2" / 1"	2 x 2"	950	750	2105	180	AQT075SC4	7393
750	For UK *	120	2" / 2" / 1"	2 x 2"	950	750	2105	180	AQT075SB4U	5035
1000	Standard	120	2" / 2" / 1"	3 x 2"	1050	850	2180	215	AQT100SB5	6675
1000	Manhole	400	2" / 2" / 1"	3 x 2"	1050	850	2180	215	AQT100SC5	9162
1000	For UK *	120	2" / 2" / 1"	3 x 2"	1050	850	2180	215	AQT100SB5U	6757
1500	Standard	400	2" / 2" / 1"	-	1240	1000	2245	295	AQT150SC5	11485
1500	For UK *	400	2" / 2" / 1"	3 x 2"	1240	1000	2245	295	AQT150SC5U	11876
2000	Standard	400	2" / 2" / 2"	-	1340	1100	2604	345	AQT200SC5	14070
2000	For UK *	400	2" / 2" / 2"	3 x 2"	1340	1100	2604	345	AQT200SC5U	14462
2500	Standard	400	DN50 / DN50 / 1¼"	-	1540	1300	2405	470	AQT250SC5	15899
3000	Standard	400	DN50 / DN50 / 1¼"	-	1540	1300	2903	550	AQT300SC5	17943
4000	Standard	400	DN65 / DN65 / 1¼"	-	1540	1300	3655	660	AQT400SC5	22194

### Abbreviations

tw = tap water / cw = cold water / circ. = circulation

D = outer diameter incl. insulation

d = outer diameter of tank

\* for UK = 2" airvent on top

Dimensions and weights are target values

### Insulation :Eurofire class D S1, do/EN 13501-1 (or B2 / DIN4102)

- 150 - 300L: Neodul 80/20 (100mm) covered with a polyester hard plastic (energy efficiency class B)
- 500 - 1000L: Neodul 80/20 (100mm) covered with a polyester hard plastic (energy efficiency class C)
- 1500 - 4000L: Neodul 100/20 (120mm) covered with a polyester hard plastic (energy efficiency class C)



**More information of these products on:**

- Alfa Laval website: <http://www.alfalaval.com/products/heat-transfer/hvac-solutions/Storage-tanks/AquaTank/>
- Alfa Laval Anytime, our eBusiness for channel partners: <https://ebusiness.alfalaval.com/alweb/view/category/0A188C41-B204-1B42-4529-A32300C3F89C#Tabd>


**AquaTank Stainless steel 10 bar with heating coil**

Domestic hot water storage vessel made of 100% 316 stainless steel type with heating coil made of stainless steel 316, Tube DN25.  
Approved according to PED and manufactured according to PED 2014/68/EU.

**Key benefits**

- + Excellent quality
- + Very long lifetime
- + Extremely hygienic; no galvanic corrosion
- + Easy to install

**Inspection opening**

- up to 200L: 2"
- > 200L: 120 mm

	Heating coil	Vessel
Max. operating pressure bar gauge	25	10
Max. operating temperature °C (2)	200	95

Volume (L)	Inspection opening	Connections (tw / cw / circ.)	Connection HC	D (mm)	d (mm)	Height (mm)	Weight (kg)	Article no.	Price
125	2"	1" / 1" / 1/2"	2 x 1"	700	500	995	40	AQTHC012SA4	2513
160	2"	1" / 1" / 1/2"	2 x 1"	700	500	1245	50	AQTHC016SA4	2849
200	2"	1" / 1" / 1/2"	2 x 1"	700	500	1495	58	AQTHC020SA4	3133
350	120 mm	1¼" / 1¼" / 3/4"	2 x 1"	750	550	1725	85	AQTHC035SB4	4088
500	120 mm	1¼" / 1¼" / 3/4"	2 x 1"	850	650	1745	95	AQTHC050SB4	4679
750	120 mm	2" / 2" / 1"	2 x 1"	1000	800	1830	145	AQTHC075SB4	6917
1000	120 mm	2" / 2" / 1"	2 x 1"	1050	850	2080	195	AQTHC100SB5	8726

**Abbreviations**

tw = tap water / cw = cold water / circ. = circulation

HC = Heating Coil

D = outer diameter incl. insulation

d = outer diameter of tank

Dimensions and weights are target values

**Insulation / Eurofire class D S1, do/EN 13501-1 (or B2 / DIN4102)**

- 125 - 200L: Neodul 80/20 (100mm) covered with a polyester hard plastic (energy efficiency class B)
- 350 - 1000L: Neodul 80/20 (100mm) covered with a polyester hard plastic (energy efficiency class C)

**More information of these products on:**

- Alfa Laval website: <http://www.alfalaval.com/products/heat-transfer/hvac-solutions/Storage-tanks/AquaTank/>

- Alfa Laval Anytime, our eBusiness for channel partners: <https://ebusiness.alfalaval.com/alweb/view/category/0A188C41-B204-1B42-4529-A32300C3F89C#Tabd>



## AquaTank Enamel 7 bar M1/M0

Domestic hot water storage vessel made of enamel (glass-lined) 7 bar.

AquaTank Enamel (7 bar) is approved according to PED and manufactured according to PED 2014/68/EU. Delivery of magnesium anode included, assembling at site.

### Key benefits

- + Good value for money
- + Easy maintenance thanks to tanks' polished inside surface
- + High resistance to any chemicals
- + Energy saving insulation (100mm) with the highest level of fireclass on the market
- + Best hydraulic and so hygienic management on the market of vessel's bottom part

### Inspection opening

- 110, 260 or 400 mm following volume

Max. operating pressure bar gauge	7
Max. operating temperature °C	95

Volume (L)	Insulation (mm)		Inspection opening (mm)	ErP class* / standing losses (W)	Connections (tw / cw / circ.)	D (mm)	d (mm)	Height (mm)	Weight (kg)	Article no.	Price
300	M1	100	110	C / 95,1	2" / 2" / 1"	750	549	1718	107	AQT030EB1100	1415
300	M1	100	260	C / 110,1	2" / 2" / 1"	750	549	1718	107	AQT030ED1100	2167
300	M0	100	110	C / 97,0	2" / 2" / 1"	750	549	1718	127	AQT030EB0100	2211
300	M0	100	260	C / 112,3	2" / 2" / 1"	750	549	1718	127	AQT030ED0100	2962
500	M1	100	110	C / 114,4	2" / 2" / 1"	830	630	2046	137	AQT050EB1100	1867
500	M1	100	260	D / 129,4	2" / 2" / 1"	830	630	2046	137	AQT050ED1100	2546
500	M0	100	110	C / 116,7	2" / 2" / 1"	830	630	2046	160	AQT050EB0100	2836
500	M0	100	260	D / 132,0	2" / 2" / 1"	830	630	2046	160	AQT050ED0100	3514
750	M1	100	110	D / 148,5	2" / 2" / 1"	990	790	1951	233	AQT075EB1100	2702
750	M1	100	400	D / 163,5	2" / 2" / 1"	990	790	1951	233	AQT075EC1100	3572
750	M0	100	110	D / 151,5	2" / 2" / 1"	990	790	1951	255	AQT075EB0100	3804
750	M0	100	400	D / 166,8	2" / 2" / 1"	990	790	1951	255	AQT075EC0100	4673
1000	M1	100	110	D / 171,6	2" / 2" / 1"	990	790	2304	263	AQT100EB1100	3016
1000	M1	100	400	E / 186,6	2" / 2" / 1"	990	790	2304	263	AQT100EC1100	4060
1000	M0	100	110	D / 175,1	2" / 2" / 1"	990	790	2304	293	AQT100EB0100	4333
1000	M0	100	400	E / 190,4	2" / 2" / 1"	990	790	2304	293	AQT100EC0100	5377
1500	M1	100	110	D / 210,1	2" / 2" / 1"	1300	1100	2130	344	AQT150EB1100	4086
1500	M1	100	400	E / 225,1	2" / 2" / 1"	1300	1100	2130	344	AQT150EC1100	5035
1500	M0	100	110	D / 214,3	2" / 2" / 1"	1300	1100	2130	374	AQT150EB0100	5816
1500	M0	100	400	E / 229,6	2" / 2" / 1"	1300	1100	2130	374	AQT150EC0100	6763
2000	M1	100	400	E / 266,3	2" / 2" / 1"	1300	1100	2315	371	AQT200EC1100	5712
2000	M0	100	400	E / 271,6	2" / 2" / 1"	1300	1100	2315	400	AQT200EC0100	7513
2500	M1	100	400	E / 298,2	2" / 2" / 1"	1600	1400	2190	501	AQT250EC1100	7049
2500	M0	100	400	E / 304,1	2" / 2" / 1"	1600	1400	2190	550	AQT250EC0100	9248
3000	M1	100	400	E / 323,2	2" / 2" / 1"	1600	1400	2319	540	AQT300EC1100	8057
3000	M0	100	400	E / 329,7	2" / 2" / 1"	1600	1400	2319	600	AQT300EC0100	10270

\* EN 12897: 2006



### Abbreviations

tw = tap water / cw = cold water / circ. = circulation  
D = outer diameter incl. insulation  
d = outer diameter of tank  
Dimensions and weights are target values

### Insulation

- M1: 100 mm glass wool covered with PVC jacket, European fireclass B.
- M0: 100 mm rockwool cladded with aluminium metal plate, European fireclass A.

### More information of these products on:

- Alfa Laval website: <http://www.alfalaval.com/products/heat-transfer/hvac-solutions/Storage-tanks/AquaTank/>
- Alfa Laval Anytime, our eBusiness for channel partners: <https://ebusiness.alfalaval.com/alweb/view/category/0A188C41-B204-1B42-4529-A32300C3F89C#Tabd>





## Alfa Laval Primary Tank 5 bar

Primary storage vessel or thermal store, made of carbon steel, suitable to store water from heating loops, solar circuits and so on the boiler side. It reduces the boiler usage and improves system efficiency through the storage of large quantities of heated primary water, can be combined with any tap water system. Primary Tank is manufactured according to PED 2014/68/EU.

### Key benefits

- + Energy saving as reduces the boiler usage of any energy source
- + Most hygienic solution, no risk of legionella
- + The lowest total costs of ownership
- + Acts as a buffer on the primary side to meet peak demand for DHW
- + Energy saving insulation (100mm) with the highest level of fireclass on the market

Max. operating pressure bar gauge	5
Max. operating temperature °C	100

Volume (L)	Insulation (mm)	ErP class* / standing losses (W)	Connections CW / HW	D (mm)	d (mm)	Height (mm)	Weight (kg)	Article no.	Price
300	M1	C / 95,13	2" / 2"	830	630	1410	68	AQTVP030M1100	1036
300	M0	C / 97	2" / 2"	830	630	1410	68	AQTVP030M0100	1743
500	M1	C / 114,38	2" / 2"	830	630	2012	96	AQTVP050M1100	1229
500	M0	C / 116,7	2" / 2"	830	630	2012	96	AQTVP050M0100	2097
750	M1	D / 148,54	2" / 2"	990	790	1907	120	AQTVP075M1100	1599
750	M0	D / 151,5	2" / 2"	990	790	1907	120	AQTVP075M0100	2520
1000	M1	D / 171,63	2" / 2"	990	790	2260	160	AQTVP100M1100	1863
1000	M0	D / 175,1	2" / 2"	990	790	2260	160	AQTVP100M0100	3032
1500	M1	D / 210,12	2" / 2"	1300	1100	2083	244	AQTVP150M1100	2648
1500	M0	D / 214,3	2" / 2"	1300	1100	2083	244	AQTVP150M0100	4183
2000	M1	E / 251,28	2" / 2"	1300	1100	2274	264	AQTVP200M1100	2814
2000	M0	E / 256,3	2" / 2"	1300	1100	2274	264	AQTVP200M0100	4409
2500	M1	E / 283,18	2" / 2"	1600	1400	2145	367	AQTVP250M1100	3556
2500	M0	E / 288,8	2" / 2"	1600	1400	2145	367	AQTVP250M0100	5276
3000	M1	E / 308,21	2" / 2"	1600	1400	2274	398	AQTVP300M1100	3951
3000	M0	E / 314,4	2" / 2"	1600	1400	2274	398	AQTVP300M0100	5668

\* EN 12897: 2006

### Abbreviations

tw = tap water / cw = cold water / circ. = circulation

d = outer diameter of tank

D = outer diameter incl. insulation

Dimensions and weights are target values.

### Insulation

- M1: 100 mm glass wool covered with PVC jacket, European fireclass B.
- M0: 100 mm rockwool clad with aluminium metal plate, European fireclass A.

### More information of these products on:

- Alfa Laval website: <http://www.alfalaval.com/products/heat-transfer/hvac-solutions/Storage-tanks/Primary-Tank-5-bar/>

- Alfa Laval Anytime, our eBusiness for channel partners: <https://ebusiness.alfalaval.com/alweb/view/category/0A188C41-B204-1B42-4529-A32300C3F89C#Tabd>

# **Pressurisation sets**

**Pressosmart MP195 - Single pump**

Compact packaged pressurisation set - fully assembled, wired, electrically and hydraulically tested - including:

- Built in 195 litre epoxy painted mild steel expansion vessel
- Single headed multicellular centrifugal pump
- Brass pressure control valve
- 230V/50Hz solenoid water feeding valve
- High and low flow level contacts
- 4-20 mA pressure sensor and IP43 electrical control box incorporating Micro2000 controller
- Integrated 5 litres anti-hammer vessel



Operating limits	Water
Max. operating pressure bar	8
Max. operating temperature °C	95

Model	Pump(s)	PCV(s)*	Building static height (m)	Hydraulic connection	L x W x H (mm)	Weight (kg)	Article no.	Price
MP195 L1	1	1	10 - 35	DN25 (1")	520 x 800 x 1070	95	MP195NL	4665
MP195 L2	1	1	10 - 45	DN25 (1")	520 x 800 x 1070	98	MP195NL4150	4828

Options for Pressosmart MP 195	Article no.	Price
89 µm core water strainer - automatic cold feed (loose)	OPTMPFILT	169
Impulse meter — 10 litres/impulsion — for water leak detection	OPTMPDETECT	311
Cold water feed bypass kit	BYPASMP	155
8 Relay board	OPT8RELAYMP	343
Software and download cable to extract data	OPTCABLE	374
Flooding detector	INONDMP	308

\* Pressure control valve

Complies with:

- Article 4.3 according to PED 2014/68/EU
- Low Voltage Directive (LVD) 73/23/EEC mandated by 2006/95/EEC
- Following norms have been applied: EN 60335 1- partial & EN60204-1 partial

**More information of these products on:**

- Alfa Laval website: <http://www.alfalaval.com/products/heat-transfer/hvac-solutions/Pressurisation-sets/Pressosmart/>
- Alfa Laval Anytime, our eBusiness for channel partners: <https://ebusiness.alfalaval.com/alweb/view/category/OA188C41-B204-1B42-4529-A32300C3F89C#Tabd>

### Pressosmart MP4 - Single pump

The Pressosmart range MP4 with **single pump** is designed to maintain stable pressure in a closed water heating and cooling network. It is a split system which needs to be piped up to Alfa Laval's **Open or Closed Expansion vessels**.

Pressosmart units perform 3 main functions:

1. Maintain of a constant and steady pressure
2. Answers to expansion
3. Network filling-up if necessary

#### Key benefits

- + Robust and long durability, up to 14.500 kW and 75 mCW static height
- + Very accurate and visible control
- + Extremely silent pump with low electrical consumption
- + Extremely small footprint compared to membrane solutions



Operating limits	Water
Max. operating pressure bar	10*
Max. operating temperature °C	95

Pump module	Building static height (m)	Pump(s)	PCV(s)**	Hydraulic connection	L x W x H (mm)	Weight (kg)	Article no.	Price
MP4N 3-16	5-15	1	1	DN25 (1")	595 x 400 x 1145	50	MP4N316	3542
MP4N 4-16	5-25	1	1	DN25 (1")	595 x 400 x 1145	50	MP4N416	3598
MP4N 5-16	15-35	1	1	DN25 (1")	595 x 400 x 1145	50	MP4N516	3643
MP4N 6-16	25	1	1	DN25 (1")	595 x 400 x 1145	50	MP4N616	3749
MP4N 6-16	26-45	1	1	DN25 (1")	595 x 400 x 1145	50	MP4N6163150	3749
MP4N 7-16	25	1	1	DN25 (1")	595 x 400 x 1145	53	MP4N716	3966
MP4N 7-16	26-45	1	1	DN25 (1")	595 x 400 x 1145	53	MP4N7163150	3966
MP4N 7-16	46-55	1	1	DN25 (1")	595 x 400 x 1145	53	MP4N7165160	3966

Options for Pressosmart MP4	Article no.	Price
8 litre anti-hammer vessel - work pressure: 8 bar max.	VASABMP01	171
89 µm core water strainer - automatic cold feed (loose)	OPTMPFILT	169
Impulse meter — 10 litres/impulsion — for water leak detection	OPTMPDETECT	311
Cold water feed bypass kit	BYPASMP	155
8 Relay board fitted in the control box	OPT8RELAYMP	343
Software and download cable to extract data	OPTCABLE	374
Flooding detector	INONDMP	308
Set of 2 float contacts	OPTMPFLO	329
High temperature level sensors for industrial and non-comfort applications	OPTHPFLO	134

\* Limited to 8 bar in case of selected option anti-hammer vessel

\*\* Pressure control valve

- For vessels see chapters "Closed expansion vessels" and "Open expansion vessels"

**Standard version equipment pump module:**

- 1 Single headed multicellular centrifugal pump
- 1 Brass pressure control valve
- Isolation valves
- 4-20 mA Pressure sensor and IP43 electrical control box incorporating Micro2000 controller
- 230V/50Hz solenoid water feeding valve

**Complies with:**

- Article 4.3 according to PED 2014/68/EU
- Low Voltage Directive (LVD) 73/23/EEC mandated by 2006/95/EEC
- Following norms have been applied: EN 60335 1- partial & EN60204-1 partial

**More information of these products on:**

- Alfa Laval website: <http://www.alfalaval.com/products/heat-transfer/hvac-solutions/Pressurisation-sets/Pressosmart/>
- Alfa Laval Anytime, our eBusiness for channel partners: <https://ebusiness.alfalaval.com/alweb/view/category/OA188C41-B204-1B42-4529-A32300C3F89C#Tabd>

### Pressosmart MP5 - Double pump

The Pressosmart range MP5 with **double pump** is designed to maintain stable pressure in a closed water heating and cooling network. It is a split system which needs to be piped up to Alfa Laval's **Open or Closed Expansion vessels**.

Pressosmart units perform 3 main functions:

1. Maintain of a constant and steady pressure
2. Answers to expansion
3. Network filling-up if necessary

#### Key benefits

- + Robust and long durability, up to 14.500 kW and 75 mCW static height
- + Very accurate and visible control
- + Extremely silent pump with low electrical consumption
- + Extremely small footprint compared to membrane solutions



Operating limits	Water
Max. operating pressure bar	10*
Max. operating temperature °C	95

Pump module	Building static height (m)	Pump(s)	PCV(s)**	Hydraulic connection	L x W x H (mm)	Weight (kg)	Article no.	Price
MP5N 3-16	5-15	2	1	DN40 (1 1/2")	595 x 465 x 1215	72	MP5N316	4252
MP5N 4-16	5-25	2	1	DN40 (1 1/2")	595 x 465 x 1215	77	MP5N416	4329
MP5N 5-16	5-25	2	1	DN40 (1 1/2")	595 x 465 x 1215	77	MP5N516	4420
MP5N 5-16	26-35	2	1	DN40 (1 1/2")	595 x 465 x 1215	77	MP5N5163140	4420
MP5N 6-16	5-25	2	1	DN40 (1 1/2")	595 x 465 x 1215	79	MP5N616	4645
MP5N 6-16	26-45	2	1	DN40 (1 1/2")	595 x 465 x 1215	79	MP5N6163150	4645
MP5N 7-16	5-25	2	1	DN40 (1 1/2")	595 x 465 x 1215	80	MP5N716	5170
MP5N 7-16	26-45	2	1	DN40 (1 1/2")	595 x 465 x 1215	80	MP5N7163150	5170
MP5N 7-16	46-55	2	1	DN40 (1 1/2")	595 x 465 x 1215	80	MP5N7165160	5170
MP5N 8-16	5-25	2	1	DN40 (1 1/2")	595 x 465 x 1215	85	MP5N816	5452
MP5N 8-16	26-45	2	1	DN40 (1 1/2")	595 x 465 x 1215	85	MP5N8163150	5452
MP5N 8-16	46-65	2	1	DN40 (1 1/2")	595 x 465 x 1215	85	MP5N8165170	5452
MP5N 3-26	5-15	2	2	DN40 (1 1/2")	595 x 465 x 1215	73	MP5N326	4940
MP5N 4-26	5-25	2	2	DN40 (1 1/2")	595 x 465 x 1215	78	MP5N426	5043
MP5N 5-26	5-25	2	2	DN40 (1 1/2")	595 x 465 x 1215	78	MP5N526	5129
MP5N 5-26	26-35	2	2	DN40 (1 1/2")	595 x 465 x 1215	78	MP5N5263140	5129
MP5N 6-26	5-25	2	2	DN40 (1 1/2")	595 x 465 x 1215	80	MP5N626	5347
MP5N 6-26	26-45	2	2	DN40 (1 1/2")	595 x 465 x 1215	80	MP5N6263150	5347
MP5N 7-26	5-25	2	2	DN40 (1 1/2")	595 x 465 x 1215	81	MP5N726	5737
MP5N 7-26	26-45	2	2	DN40 (1 1/2")	595 x 465 x 1215	81	MP5N7263150	5737
MP5N 7-26	46-55	2	2	DN40 (1 1/2")	595 x 465 x 1215	81	MP5N7265160	5737
MP5N 8-26	5-25	2	2	DN40 (1 1/2")	595 x 465 x 1215	86	MP5N826	6070
MP5N 8-26	26-45	2	2	DN40 (1 1/2")	595 x 465 x 1215	86	MP5N8263150	6070
MP5N 8-26	46-65	2	2	DN40 (1 1/2")	595 x 465 x 1215	86	MP5N8265170	6070

Options for Pressosmart MP5	Article no.	Price
8 litre anti-hammer vessel - work pressure: 8 Bar max.	VASABMP02	171
89 µm core water strainer - automatic cold feed (loose)	OPTMPFILT	169
Impulse meter — 10 litres/impulsion — for water leak detection	OPTMPDETECT	311
Cold water feed bypass kit	BYPASMP	155
8 Relay board fitted in the control box	OPT8RELAYMP	343
Software and download cable to extract data	OPTCABLE	374
Flooding detector	INONDMP	308
Set of 2 float contacts	OPTMPFLO	329
High temperature level sensors for industrial and non-comfort applications	OPTHPFLO	134

\* Limited to 8 bar in case of selected option anti-hammer vessel

\*\* Pressure control valve

- For vessels see chapters "Closed expansion vessels" and "Open expansion vessels"

### Standard version equipment pump module:

- 2 Single headed multicellular centrifugal pumps
- 1 or 2 Brass pressure control valves
- Isolation valves
- 4-20 mA Pressure sensor and IP43 electrical control box incorporating Micro2000 controller
- 230V/50Hz solenoid water feeding valve

Complies with:

- Article 4.3 according to PED 2014/68/EU
- Low Voltage Directive (LVD) 73/23/EEC mandated by 2006/95/EEC
- Following norms have been applied: EN 60335 1- partial & EN60204-1 partial

### More information of these products on:

- Alfa Laval website: <http://www.alfalaval.com/products/heat-transfer/hvac-solutions/Pressurisation-sets/Pressosmart/>
- Alfa Laval Anytime, our eBusiness for channel partners: <https://ebusiness.alfalaval.com/alweb/view/category/0A188C41-B204-1B42-4529-A32300C3F89C#Tabd>

### Pressosmart MP7 - Double pump

The Pressosmart range MP7 **double pump** is designed to maintain stable pressure in a closed water heating and cooling network. It is a split system which needs to be piped up to Alfa Laval's **Open or Closed Expansion vessels**. Pressosmart units perform 3 main functions:

1. Maintain of a constant and steady pressure
2. Answers to expansion
3. Network filling-up if necessary

#### Key benefits

- + Robust and long durability, up to 14.500 kW and 75 mCW static height
- + Very accurate and visible control
- + Extremely silent pump with low electrical consumption
- + Extremely small footprint compared to membrane solutions



Operating limits	Water
Max. operating pressure bar	10*
Max. operating temperature °C	95

Pump module	Building static height (m)	Pump(s)	PCV(s)**	Hydraulic connection	L x W x H (mm)	Weight (kg)	Article no.	Price
MP7 10-16	10-45	2	1 ***	DN50 (2")	595 x 500 x 1460	121	MP71016	6372
MP7 10-16	46-55	2	1 ***	DN50 (2")	595 x 500 x 1460	121	MP710164555	6372
MP7 13-16	10-45	2	1 ***	DN50 (2")	595 x 500 x 1460	135	MP71316	6959
MP7 13-16	46-55	2	1 ***	DN50 (2")	595 x 500 x 1460	135	MP713164565	6959
MP7 15-16	10-45	2	1 ***	DN50 (2")	595 x 500 x 1460	137	MP71516	7121
MP7 15-16	46-75	2	1 ***	DN50 (2")	595 x 500 x 1460	137	MP715164575	7121
MP7 10-26	10-45	2	2 ***	DN50 (2")	595 x 500 x 1460	122	MP71026	7018
MP7 10-26	46-55	2	2 ***	DN50 (2")	595 x 500 x 1460	122	MP710264555	7018
MP7 13-26	10-45	2	2 ***	DN50 (2")	595 x 500 x 1460	136	MP71326	7604
MP7 13-26	46-55	2	2 ***	DN50 (2")	595 x 500 x 1460	136	MP713264565	7604
MP7 15-26	10-45	2	2 ***	DN50 (2")	595 x 500 x 1460	138	MP71526	7767
MP7 15-26	46-75	2	2 ***	DN50 (2")	595 x 500 x 1460	138	MP715264575	7767
MP7 10-17	10-45	2	1 ****	DN50 (2")	595 x 500 x 1460	122	MP71017	7107
MP7 10-17	46-55	2	1 ****	DN50 (2")	595 x 500 x 1460	122	MP710174555	7107
MP7 13-17	10-45	2	1 ****	DN50 (2")	595 x 500 x 1460	137	MP71317	7695
MP7 13-17	46-55	2	1 ****	DN50 (2")	595 x 500 x 1460	137	MP713174555	7695
MP7 13-17	56-65	2	1 ****	DN50 (2")	595 x 500 x 1460	137	MP713175565	7695
MP7 15-17	10-45	2	1 ****	DN50 (2")	595 x 500 x 1460	138	MP71517	7858
MP7 15-17	46-55	2	1 ****	DN50 (2")	595 x 500 x 1460	138	MP715174555	7858
MP7 15-17	56-75	2	1 ****	DN50 (2")	595 x 500 x 1460	138	MP715175575	7858
MP7 10-27	10-45	2	2 ****	DN50 (2")	595 x 500 x 1460	123	MP71027	8490
MP7 10-27	46-55	2	2 ****	DN50 (2")	595 x 500 x 1460	123	MP710274555	8490
MP7 13-27	10-45	2	2 ****	DN50 (2")	595 x 500 x 1460	137	MP71327	9074
MP7 13-27	46-55	2	2 ****	DN50 (2")	595 x 500 x 1460	137	MP713274555	9074
MP7 13-27	56-65	2	2 ****	DN50 (2")	595 x 500 x 1460	137	MP713275565	9074
MP7 15-27	10-45	2	2 ****	DN50 (2")	595 x 500 x 1460	139	MP71527	9237
MP7 15-27	46-55	2	2 ****	DN50 (2")	595 x 500 x 1460	139	MP715274555	9237
MP7 15-27	56-75	2	2 ****	DN50 (2")	595 x 500 x 1460	139	MP715275575	9237

\* Limited to 8 bar in case of selected option anti-hammer vessel

\*\* Pressure control valve / \*\*\* Pressure control valve **brass body** type 44-6

\*\*\*\*Pressure control valve **brass body** type 44-7



Options for Presssmart MP 7	Article no.	Price
8 litre anti-hammer vessel - work pressure: 8 Bar max.	VASABMP03	208
89 µm core water strainer - automatic cold feed (loose)	OPTMPFILT	169
Impulse meter — 10 litres/impulsion — for water leak detection	OPTMPDETECT	311
Cold water feed bypass kit	BYPASMP	155
8 Relay board fitted in the control box	OPT8RELAYMP	343
Software and download cable to extract data	OPTCABLE	374
Flooding detector	INONDMP	308
Set of 2 float contacts	OPTMPFLO	329
High temperature level sensors for industrial and non-comfort applications	OPTHPFLO	134

- For vessels see chapters "Closed expansion vessels" and "Open expansion vessels"

### Standard version equipment pump module:

- 2 Single headed multicellular centrifugal pumps 230V 1Ph+N
- 1 or 2 Pressure control valves brass or stainless steel body
- Isolation valves
- 4-20 mA Pressure sensor and IP43 electrical control box incorporating Micro2000 controller
- 230V/50Hz solenoid water feeding valve

Complies with:

- Article 4.3 according to PED 2014/68/EU
- Low Voltage Directive (LVD) 73/23/EEC mandated by 2006/95/EEC
- Following norms have been applied: EN 60335 1- partial & EN60204-1 partial

### More information of these products on:

- Alfa Laval website: <http://www.alfalaval.com/products/heat-transfer/hvac-solutions/Pressurisation-sets/Pressosmart/>
- Alfa Laval Anytime, our eBusiness for channel partners: <https://ebusiness.alfalaval.com/alweb/view/category/0A188C41-B204-1B42-4529-A32300C3F89C#Tabd>



### Closed expansion vessels

Standard version equipment:

- Outside steel, inside internal rubber bag
- Two configurations:
  - 1) **with** control equipment:
    - air vent and feet
    - 1 bar g. safety valve
    - piezo electrical level gauge
    - added electrical box transducer
  - 2) **without** control equipment:
    - air vent and feet

#### Key benefits

- + Water loop is not in contact with oxygen in air; reducing corrosion and extending the lifetime of the entire installation
- + Easy upgrading from open to closed vessels; no need to change the pump unit
- + Possibility to have several closed vessels of 500L in serie

Operating limits	Water
Max. operating pressure bar	1
Max. operating temperature °C	80

Volume (L)	Control equipment	To be connected to	Diameter	Height (mm)	Weight (kg)	Article no.	Price
500	with	MP4 / MP5	775	1642	90	VASMP0500E5	4429
500	with	MP7	775	1642	90	VASMP0500E7	4429
500	without	MP4 / MP5 / MP7	775	1642	90	VASMP0500	1521

#### More information of these products on:

- Alfa Laval website: <http://www.alfalaval.com/products/heat-transfer/hvac-solutions/Pressurisation-sets/Pressosmart/>
- Alfa Laval Anytime, our eBusiness for channel partners: <https://ebusiness.alfalaval.com/alweb/view/category/OA188C41-B204-1B42-4529-A32300C3F89C#Tabd>


**Open expansion vessels**

- PPH material (polypropylene)
- Excellent corrosion resistance
- Removable top cover for internal inspection
- Strengthened connections (steel rings)
- Specially designed to be piped up to all pump modules
- Capacities from 200 to 5000 litres
- Equipped with 2 float contacts if vessel is combined with a pump module (article number ending with "...PPHX")
- No float contacts are provided for loose vessels (article number ending with "...PPHY")

**Key benefits**

- + Good value for money
- + Excellent corrosion resistance
- + Possibility to have several vessels in serie
- + Large choice of volumes

Operating limits	Water
Max. operating pressure bar	atmosphere
Max. operating temperature °C	80

Open vessels combined with a pump module; 2 float contacts are included / To be connected to MP4 / MP5 / MP7					
Volume (L)	Diameter (mm)	Height (mm)	Weight (kg)	Article no.	Price
200	400	1505	14	BAC0200PPHX	1452
400	600	1505	19	BAC0400PPHX	1466
600	700	1505	23	BAC0600PPHX	1608
800	850	1506	33	BAC0800PPHX	1706
1000	950	1506	38	BAC1000PPHX	1826
1800	1250	1506	57	BAC1800PPHX	2530
2500	1250	2006	85	BAC2500PPHX	2933
3000	1430	2008	104	BAC3000PPHX	3286
3500	1430	2258	113	BAC3500PPHX	3576
4000	1430	2508	122	BAC4000PPHX	3726
5000	1430	3008	167	BAC5000PPHX	4044

Loose Open vessels; float contacts are NOT included / To be connected to MP4 / MP5 / MP7					
Volume (L)	Diameter (mm)	Height (mm)	Weight (kg)	Article no.	Price
200	400	1505	14	BAC0200PPHY	1221
400	600	1505	19	BAC0400PPHY	1235
600	700	1505	23	BAC0600PPHY	1376
800	850	1506	33	BAC0800PPHY	1474
1000	950	1506	38	BAC1000PPHY	1594
1800	1250	1506	57	BAC1800PPHY	2297
2500	1250	2006	85	BAC2500PPHY	2702
3000	1430	2008	104	BAC3000PPHY	3054
3500	1430	2258	113	BAC3500PPHY	3343
4000	1430	2508	122	BAC4000PPHY	3495
5000	1430	3008	167	BAC5000PPHY	3812

**More information of these products on:**

- Alfa Laval website: <http://www.alfalaval.com/products/heat-transfer/hvac-solutions/Pressurisation-sets/Pressosmart/>
- Alfa Laval Anytime, our eBusiness for channel partners: <https://ebusiness.alfalaval.com/alweb/view/category/0A188C41-B204-1B42-4529-A32300C3F89C#Tabd>

# **Spare parts**

### Spare parts

Spare parts for Heating & Cooling Systems can be selected in a few clicks in the "HVAC Parts Finder". This digital tool -very easy to use - is available on Alfa Laval Anytime, our eBusiness for channel partners. Please consult Alfa Laval.



**Alfa Laval Spare Parts Finder** RESET HVAC solutions / version 2016.3 / Oct. 2016

<b>1. Product Category</b> Tap water systems Heating systems medium Heating systems small Magnetic Filters Pool heaters Pressurisation sets Storage tanks (blank)	<b>2. Product name</b> AquaFirst AlfaPilot AquaCompact AquaEfficiency AquaFlow AquaGenius AquaMicro (Alfa Laval) AquaMicro (Detsonorm) Aquamodule (HR5) AquaPool AquaProtecta	<b>3. Sparepart</b> connection plate for frame gasket only <b>HE Gasketed</b> insulation pump primary pump secondary tightening bolts valve - kit 3-port valve valve - safety valve regulator regulator	<b>4. Model</b> 1000 <b>2000</b> 4000 6000 6100 8000
<b>5. Year</b> N/A	<b>6. Country</b> N/A	<b>7. Pump type</b> N/A	

Item to order	Comment
PLAM3H316E4B	endplate II (plate with 4 holes & 2 gaskets) STAINLESS STEEL
PLAM3H316E4F	endplate I (plate without holes) STAINLESS STEEL
PLAM3H316EST	channel plate STAINLESS STEEL

**Alfa Laval in brief**

Alfa Laval is a leading global provider of specialized products and engineered solutions.

Our equipment, systems and services are dedicated to helping customers optimize the performance of their processes. Time and time again.

We help our customers to heat, cool, separate and transport products such as oil, water, chemicals, beverages, foodstuffs, starch and pharmaceuticals.

Our worldwide organization works closely with customers in almost 100 countries to help them stay ahead.

**How to contact Alfa Laval**

Up-to-date Alfa Laval contact details for all countries are always available on our website at [www.alfalaval.com](http://www.alfalaval.com)

